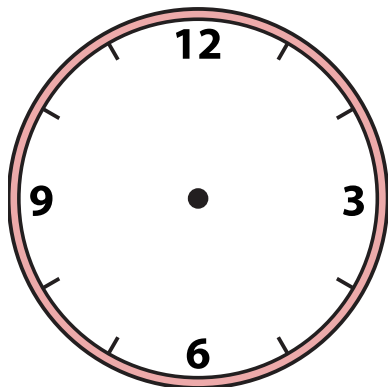


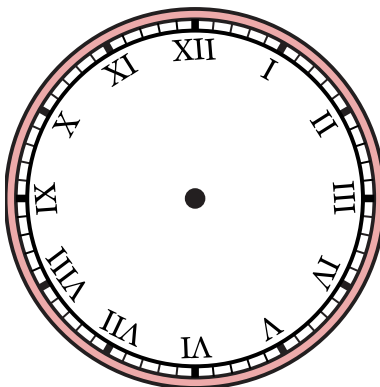


Draw the hour and minute hand on the clock so it represents the time shown.

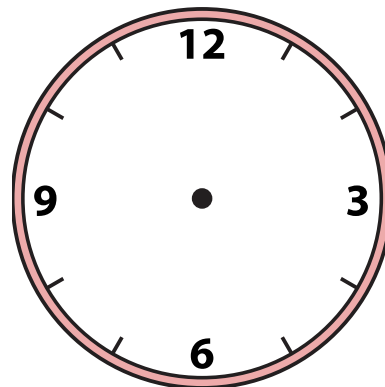
1) 7:39



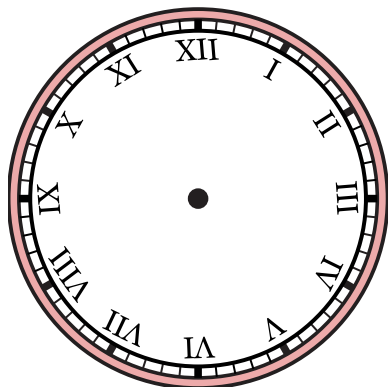
2) 9:01



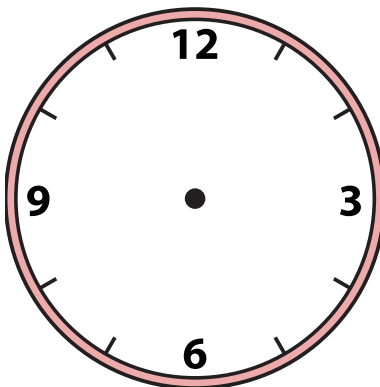
3) 7:06



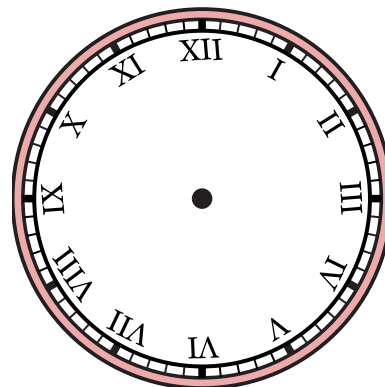
4) 5:50



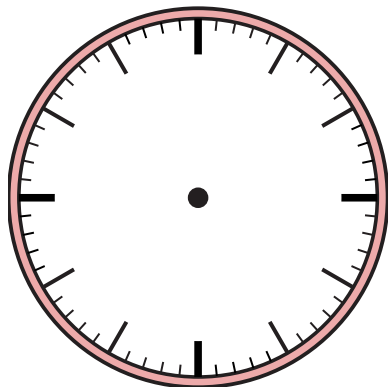
5) 3:34



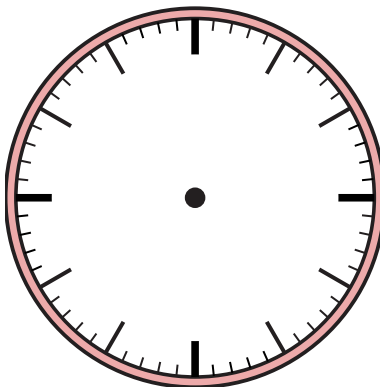
6) 7:02



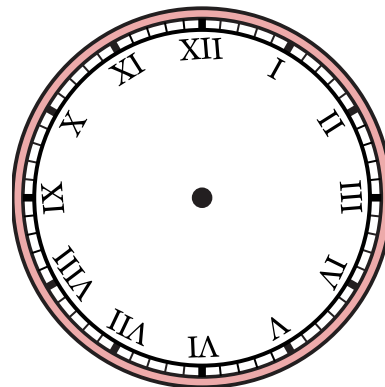
7) 11:27



8) 10:22



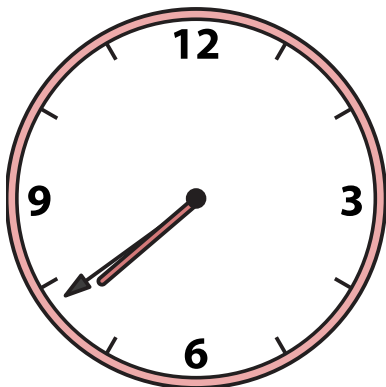
9) 12:07



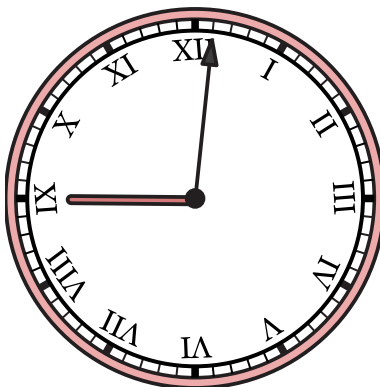


Draw the hour and minute hand on the clock so it represents the time shown.

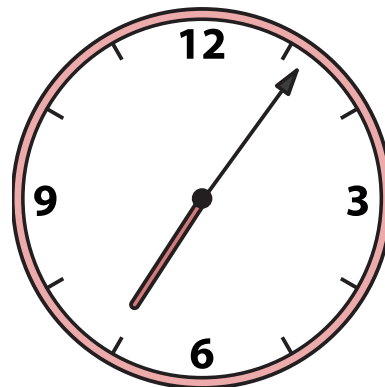
1) 7:39



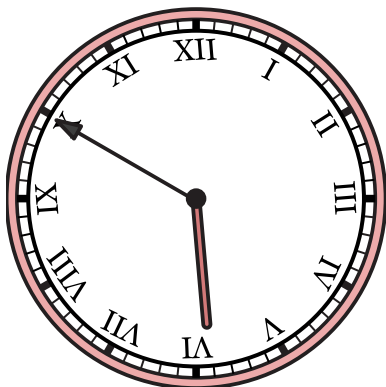
2) 9:01



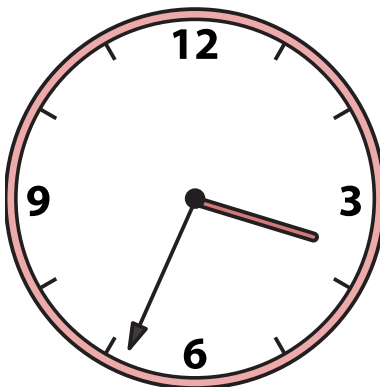
3) 7:06



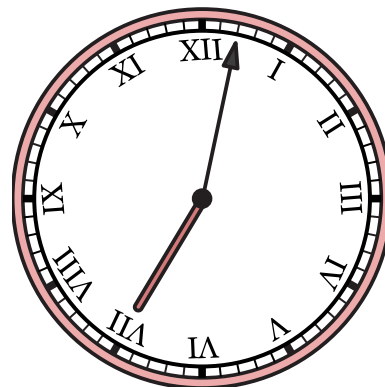
4) 5:50



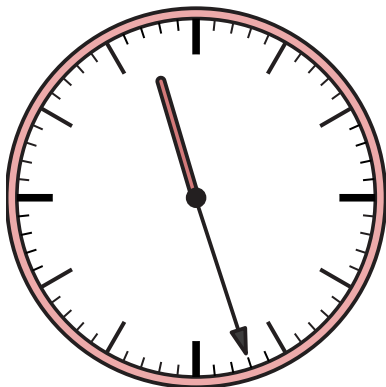
5) 3:34



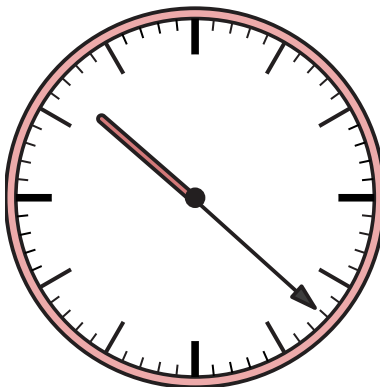
6) 7:02



7) 11:27



8) 10:22



9) 12:07

