

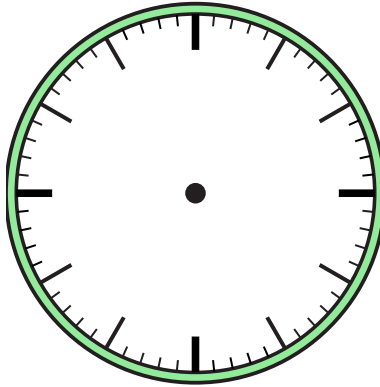


Draw the hour and minute hand on the clock so it represents the time shown.

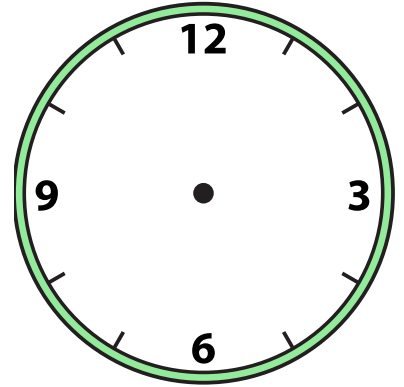
1) 7:00



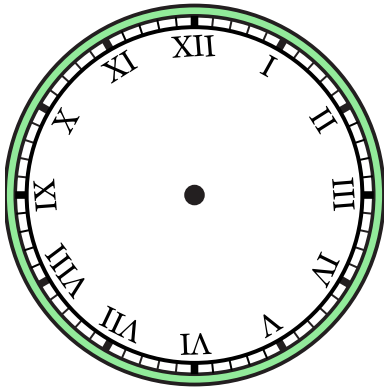
2) 8:30



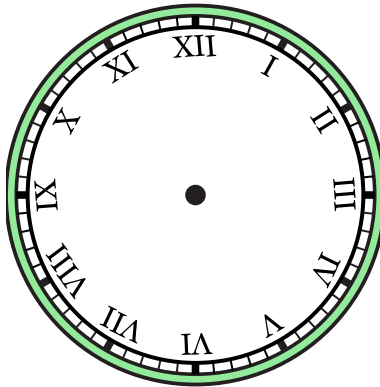
3) 2:30



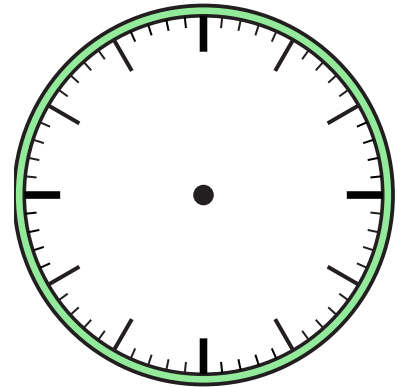
4) 12:30



5) 3:00



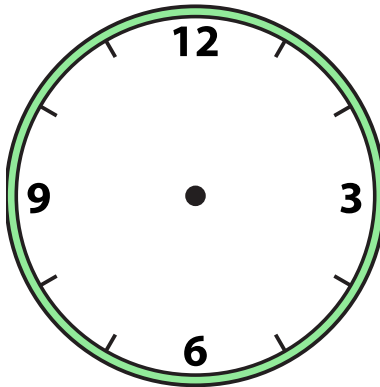
6) 7:30



7) 6:30



8) 8:00



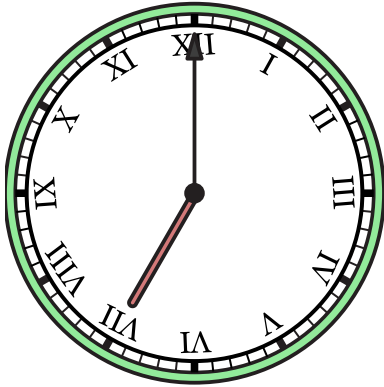
9) 11:00



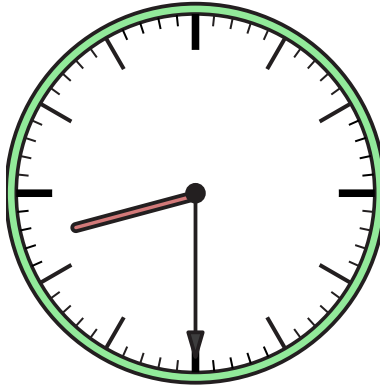


Draw the hour and minute hand on the clock so it represents the time shown.

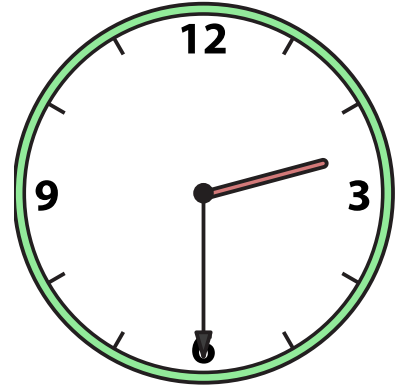
1) 7:00



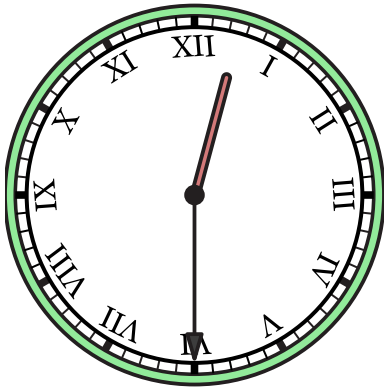
2) 8:30



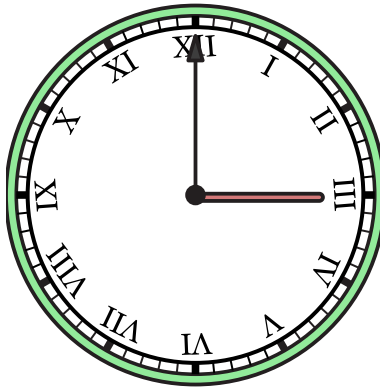
3) 2:30



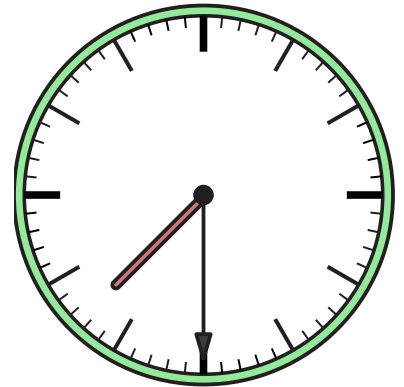
4) 12:30



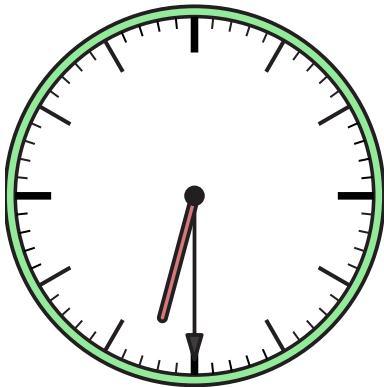
5) 3:00



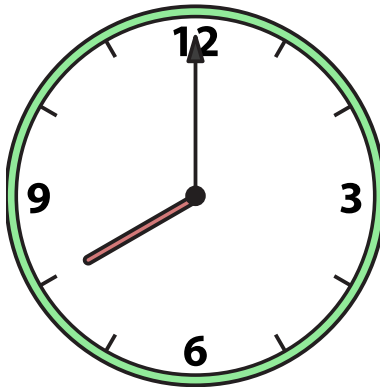
6) 7:30



7) 6:30



8) 8:00



9) 11:00

