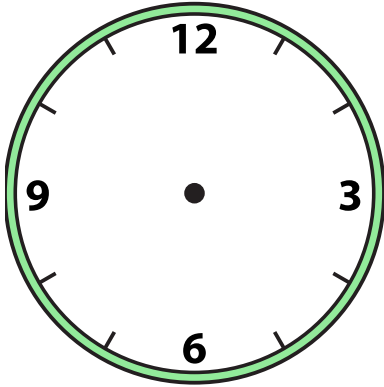


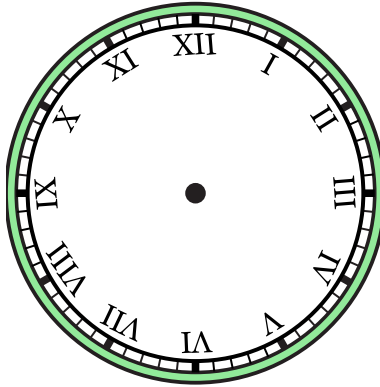


Draw the hour and minute hand on the clock so it represents the time shown.

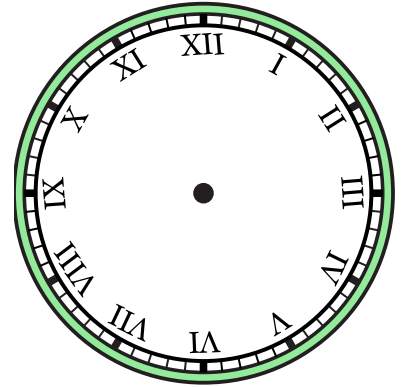
1) 3:30



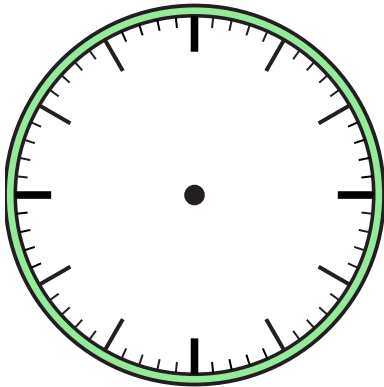
2) 5:30



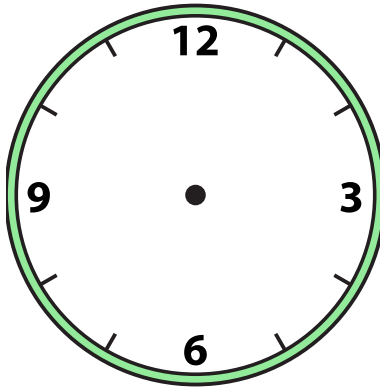
3) 3:00



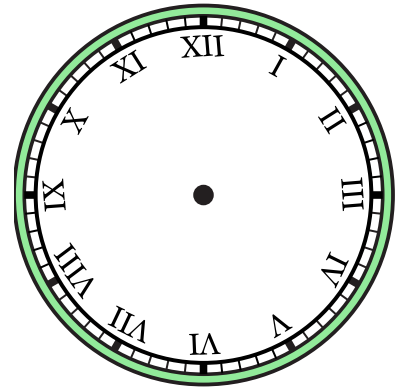
4) 7:00



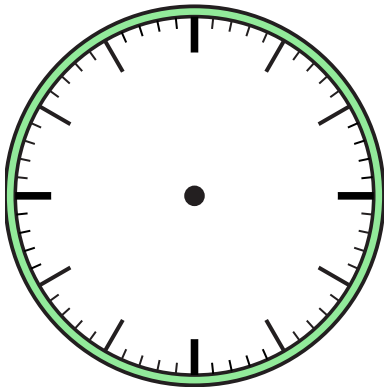
5) 12:30



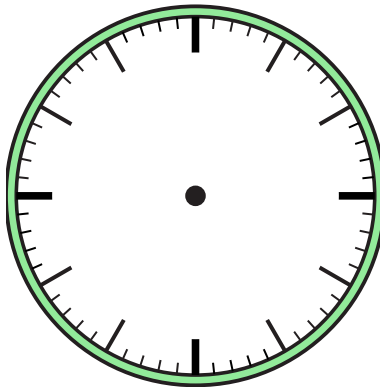
6) 4:30



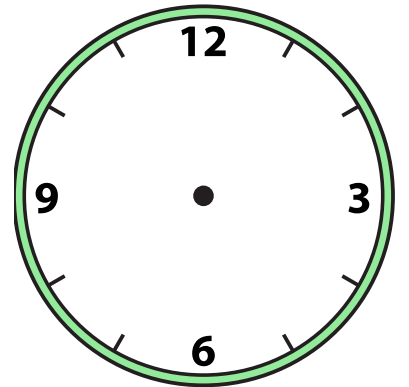
7) 5:00



8) 9:00



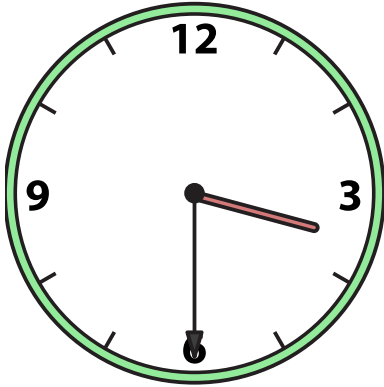
9) 6:30



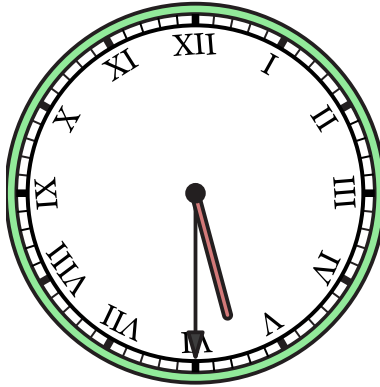


Draw the hour and minute hand on the clock so it represents the time shown.

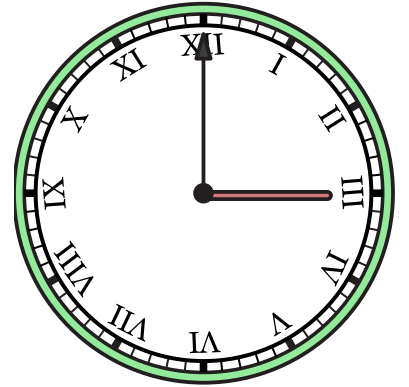
1) 3:30



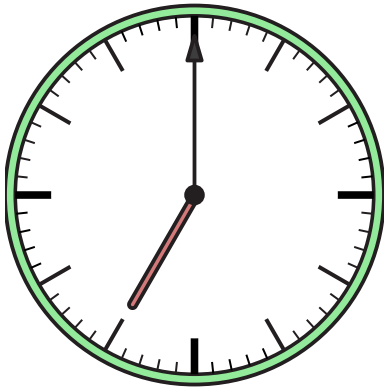
2) 5:30



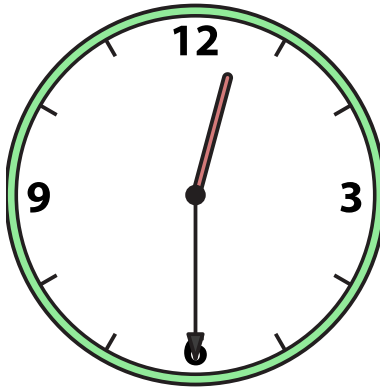
3) 3:00



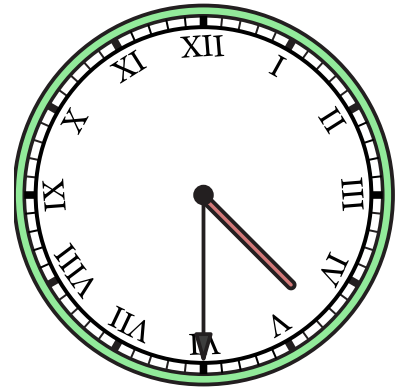
4) 7:00



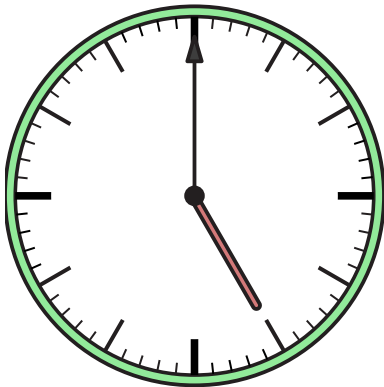
5) 12:30



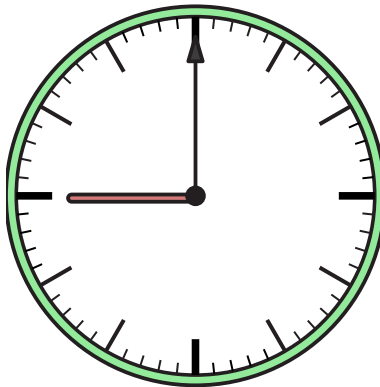
6) 4:30



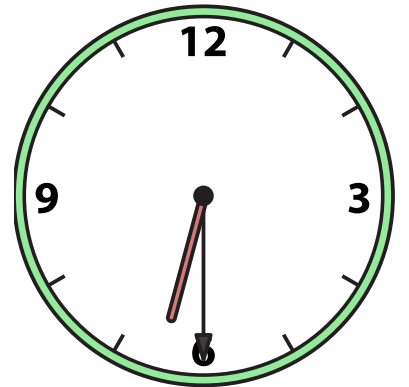
7) 5:00



8) 9:00



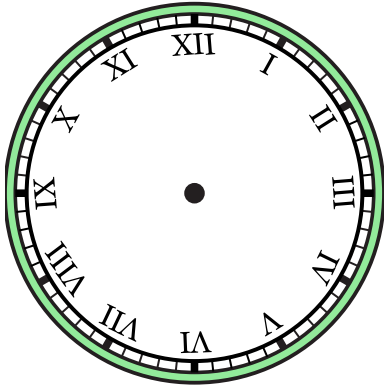
9) 6:30



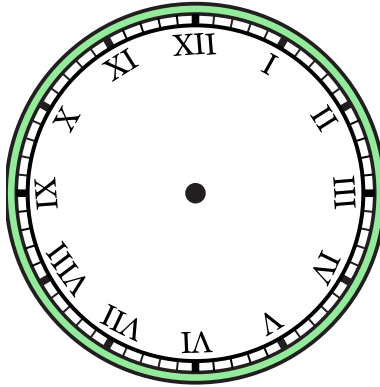


Draw the hour and minute hand on the clock so it represents the time shown.

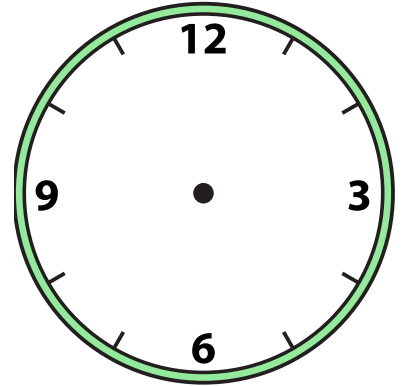
1) 10:00



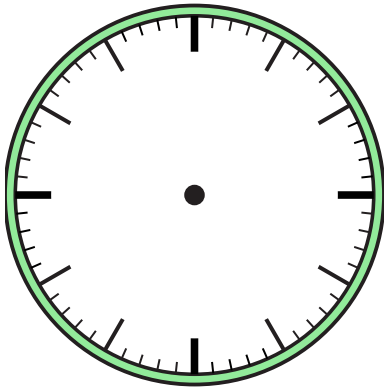
2) 1:30



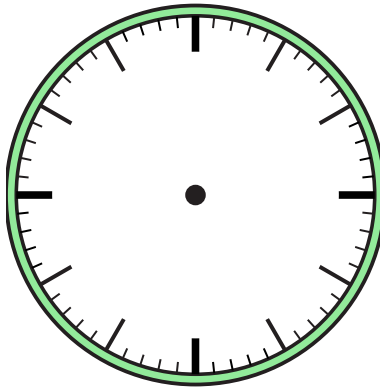
3) 6:30



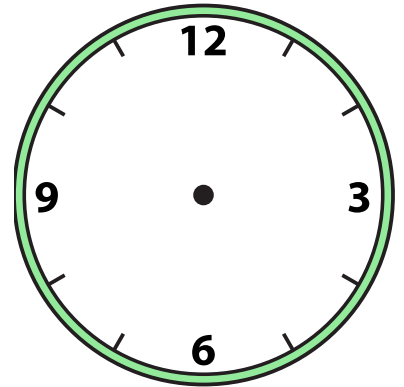
4) 5:00



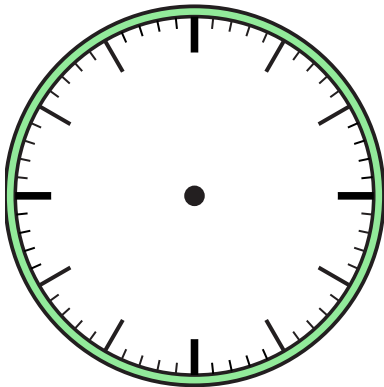
5) 7:30



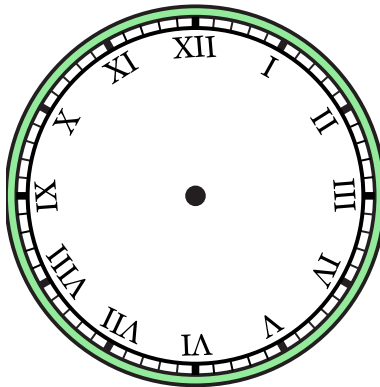
6) 2:30



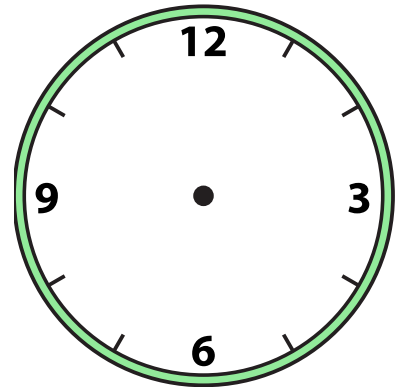
7) 11:00



8) 12:30



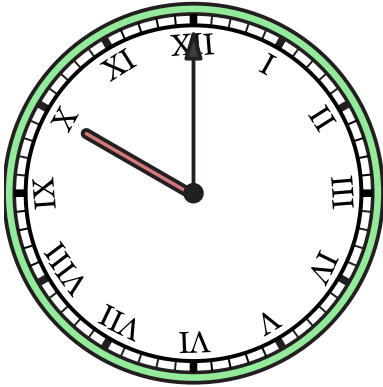
9) 9:00



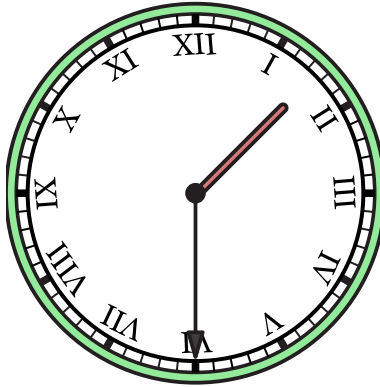


Draw the hour and minute hand on the clock so it represents the time shown.

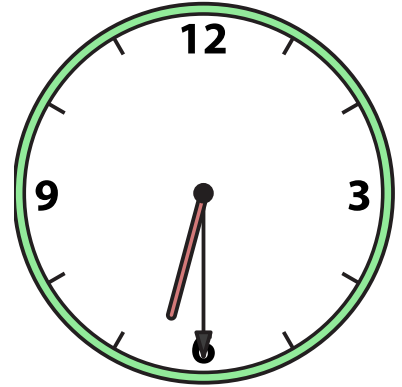
1) 10:00



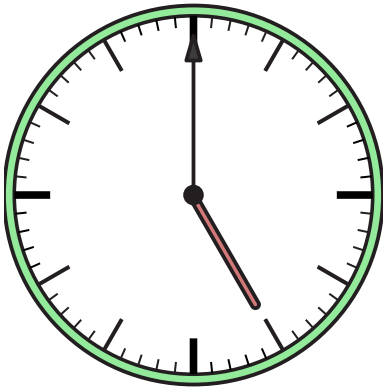
2) 1:30



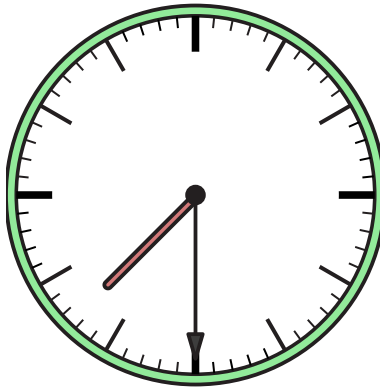
3) 6:30



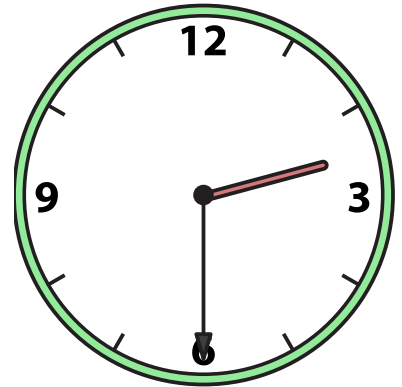
4) 5:00



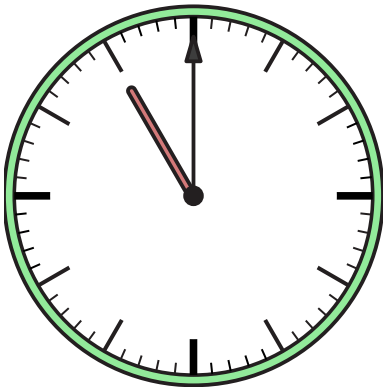
5) 7:30



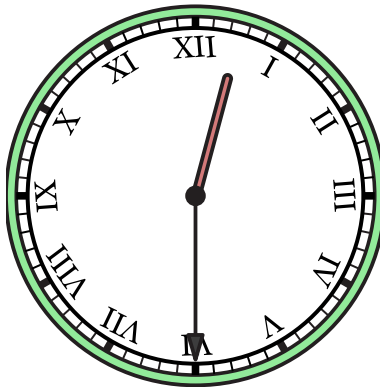
6) 2:30



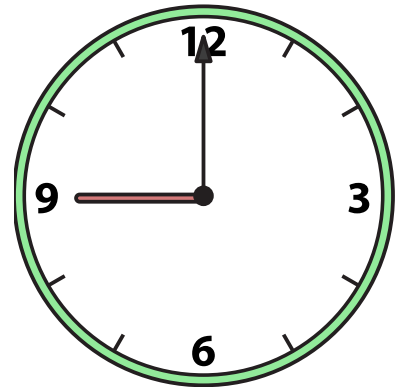
7) 11:00



8) 12:30



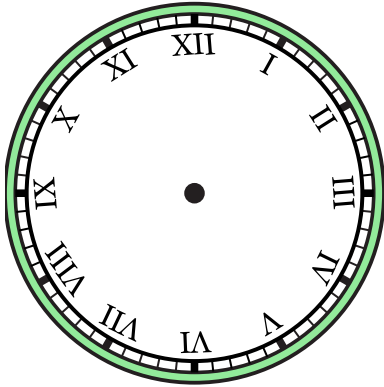
9) 9:00



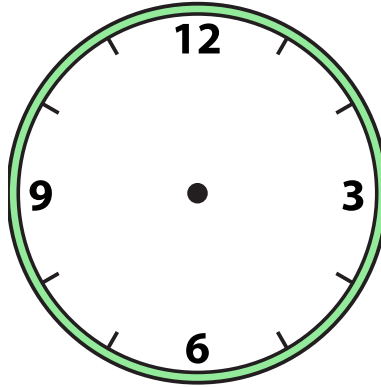


Draw the hour and minute hand on the clock so it represents the time shown.

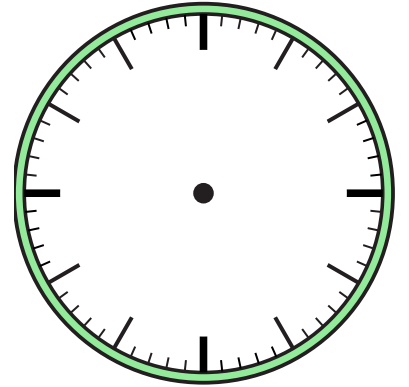
1) 2:30



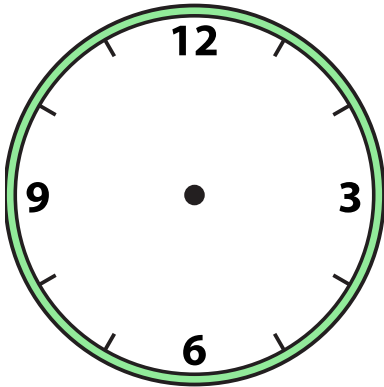
2) 2:00



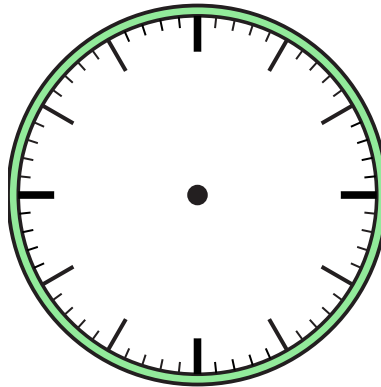
3) 8:00



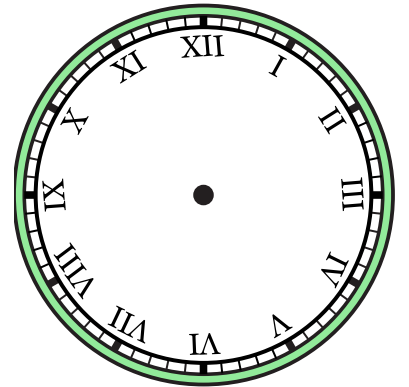
4) 4:00



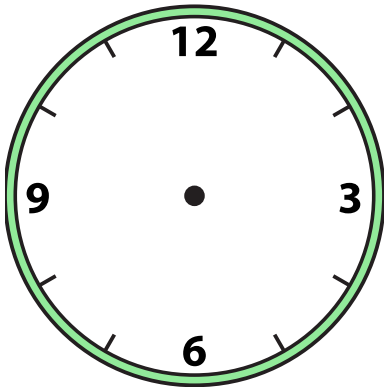
5) 10:30



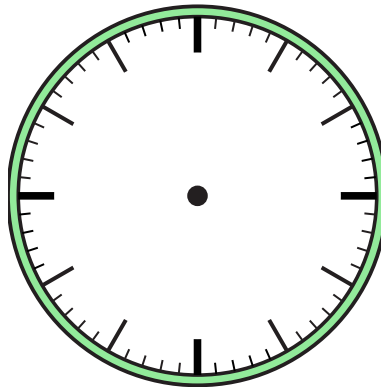
6) 11:00



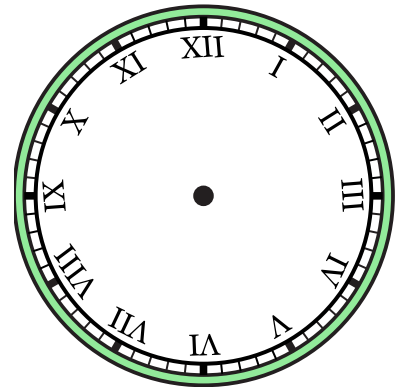
7) 9:30



8) 5:30



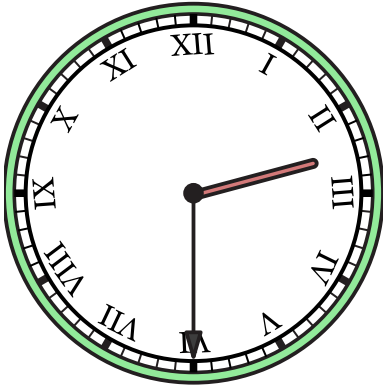
9) 12:00



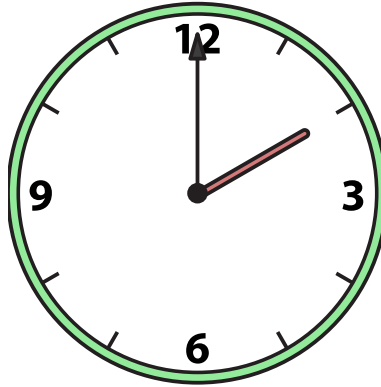


Draw the hour and minute hand on the clock so it represents the time shown.

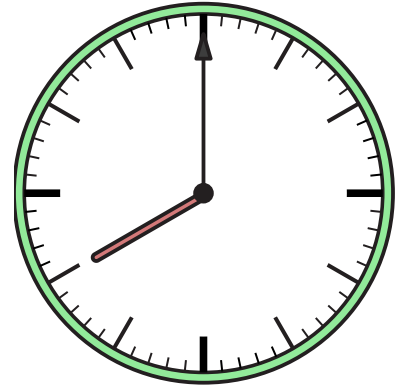
1) 2:30



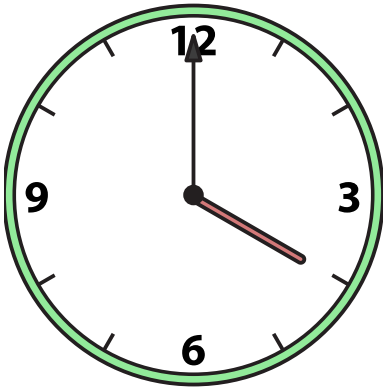
2) 2:00



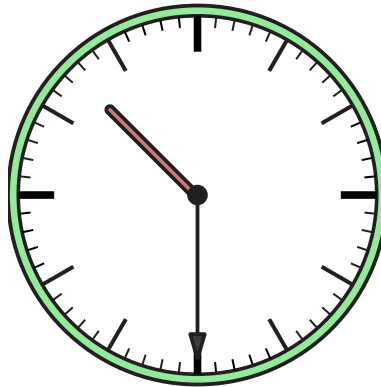
3) 8:00



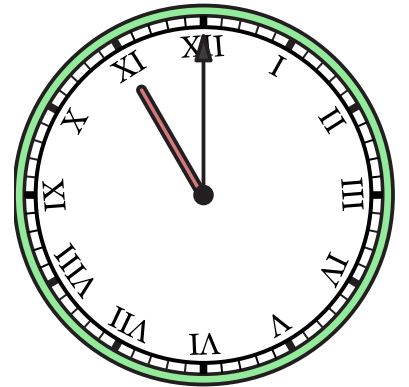
4) 4:00



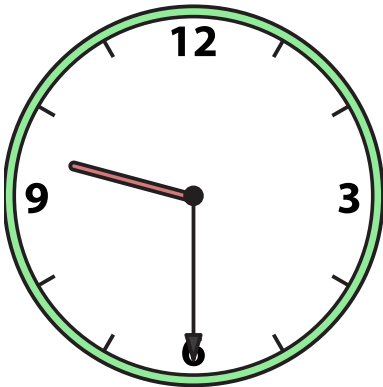
5) 10:30



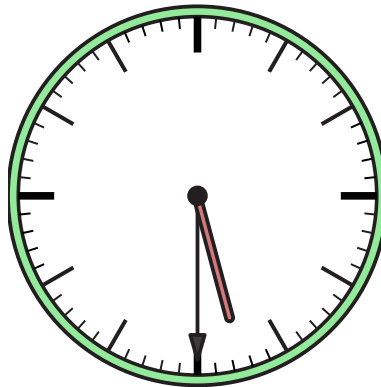
6) 11:00



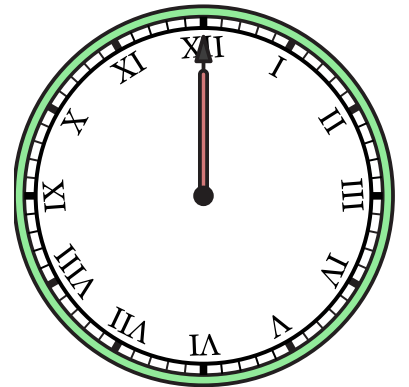
7) 9:30



8) 5:30



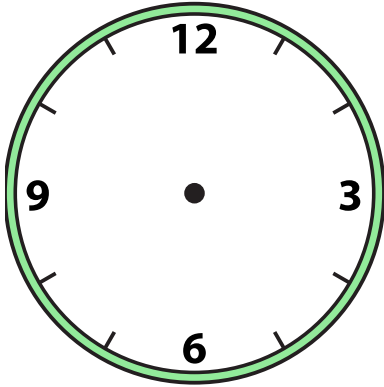
9) 12:00



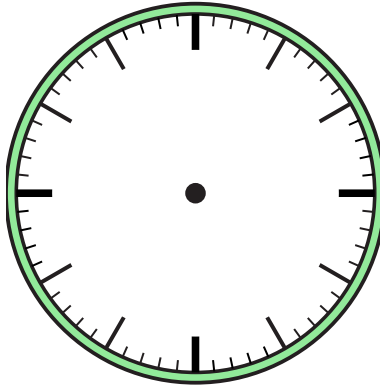


Draw the hour and minute hand on the clock so it represents the time shown.

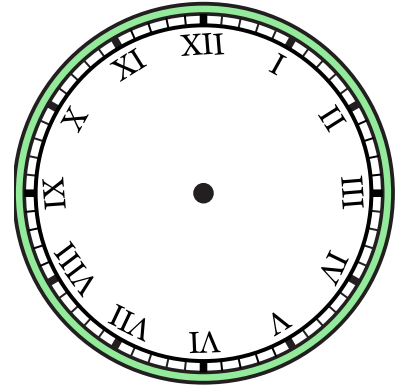
1) 1:30



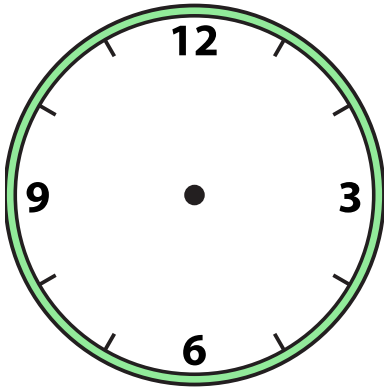
2) 8:00



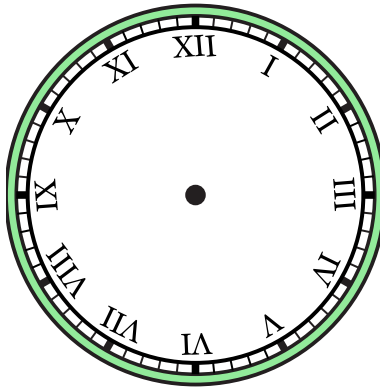
3) 1:00



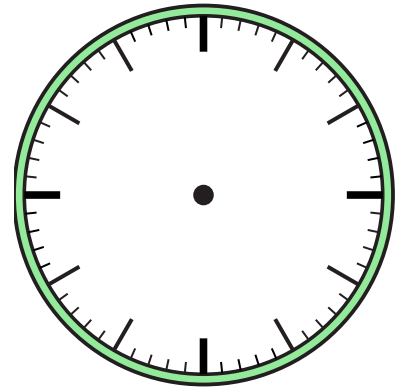
4) 12:30



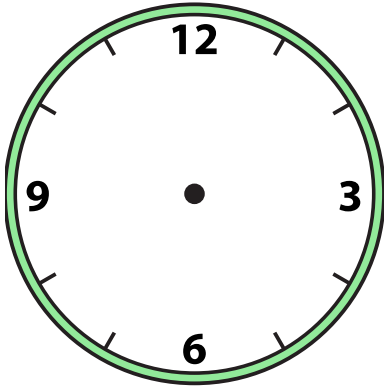
5) 4:00



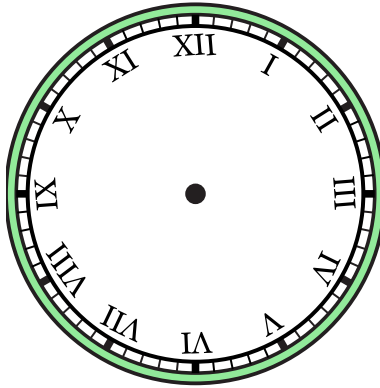
6) 10:00



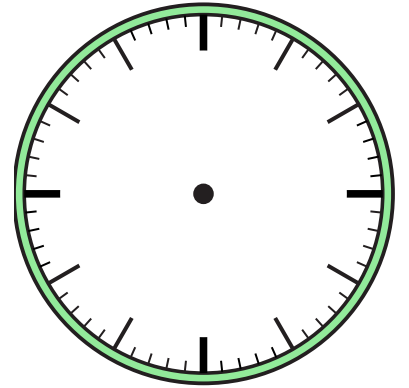
7) 6:30



8) 2:30



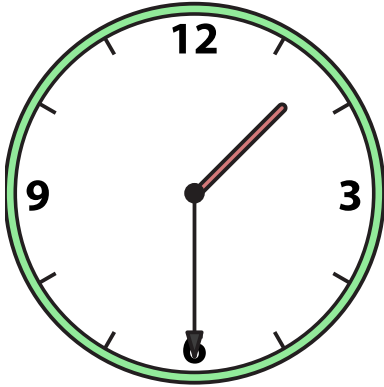
9) 7:30



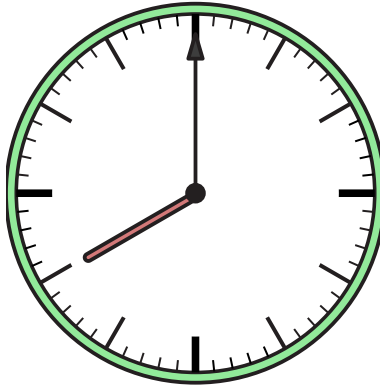


Draw the hour and minute hand on the clock so it represents the time shown.

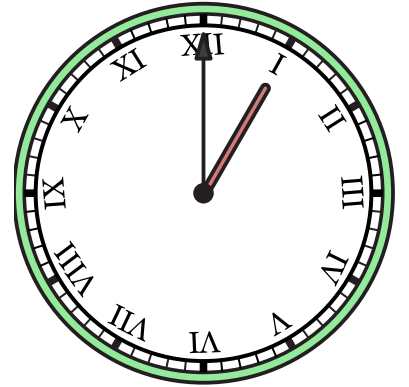
1) 1:30



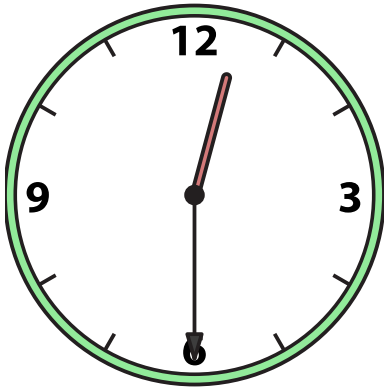
2) 8:00



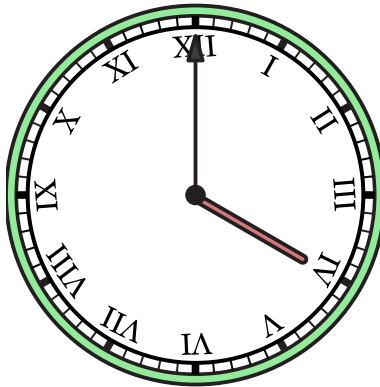
3) 1:00



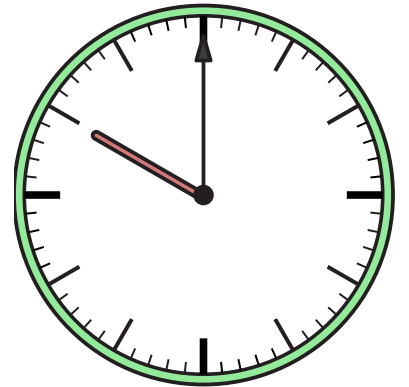
4) 12:30



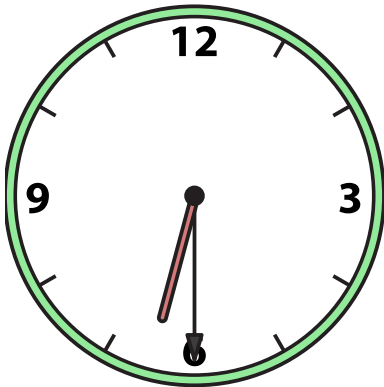
5) 4:00



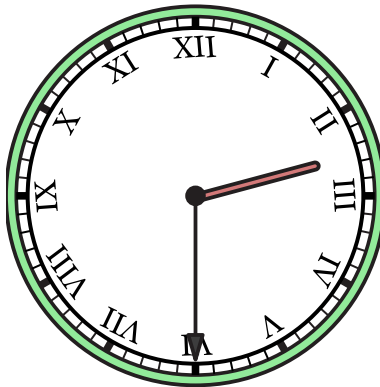
6) 10:00



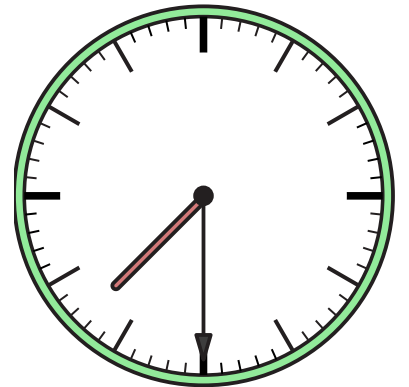
7) 6:30



8) 2:30



9) 7:30



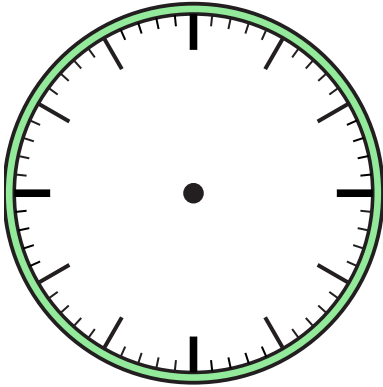




Draw the hour and minute hand on the clock so it represents the time shown.

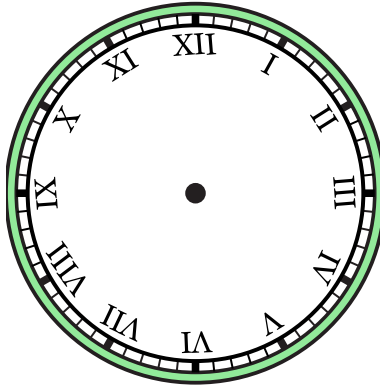
1)

6:00



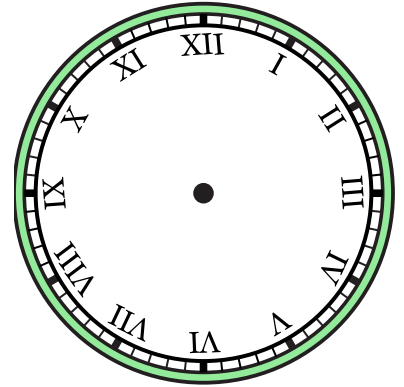
2)

11:30



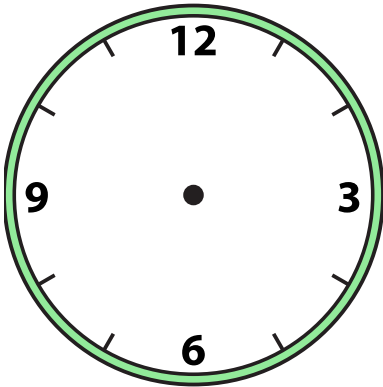
3)

12:00



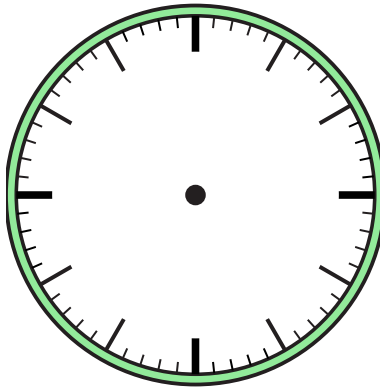
4)

9:00



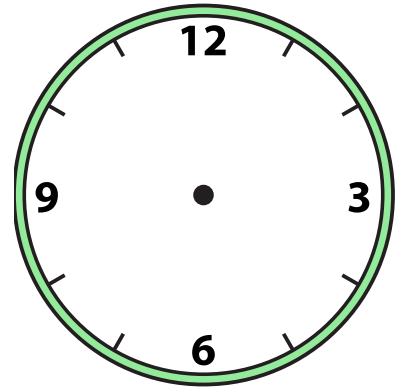
5)

12:00



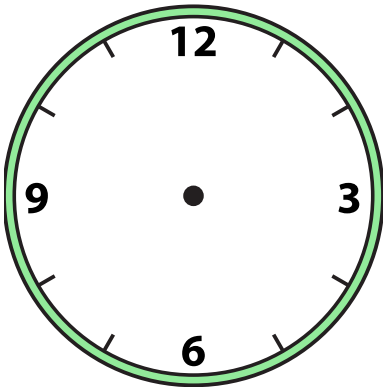
6)

6:30



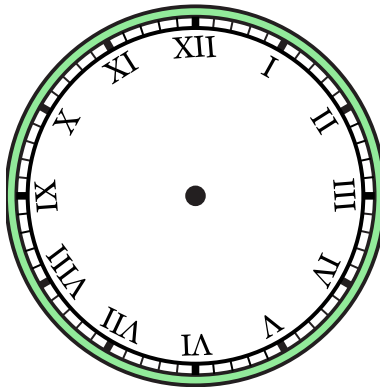
7)

10:30



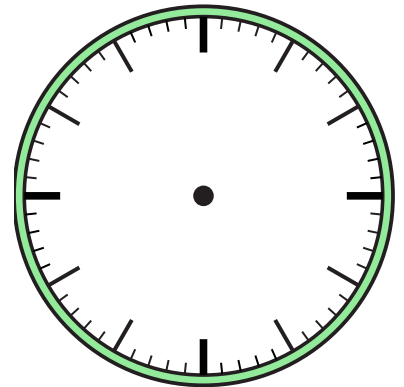
8)

3:00



9)

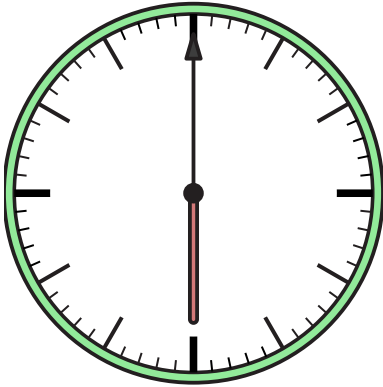
11:00



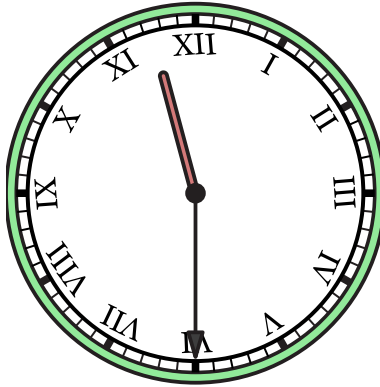


Draw the hour and minute hand on the clock so it represents the time shown.

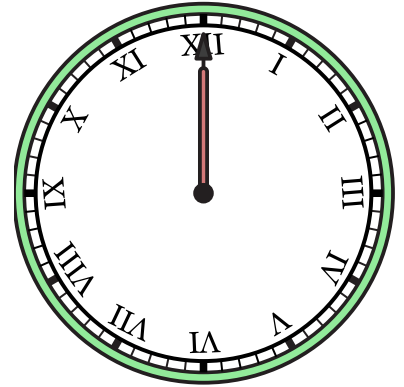
1) 6:00



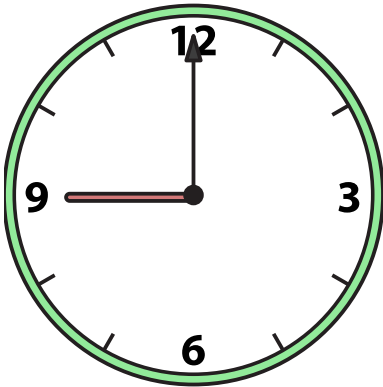
2) 11:30



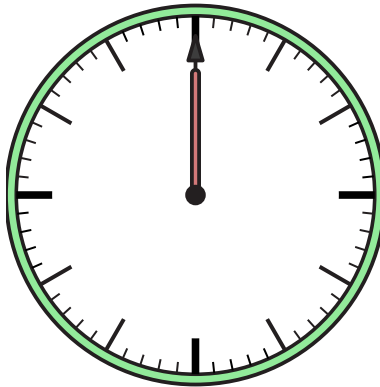
3) 12:00



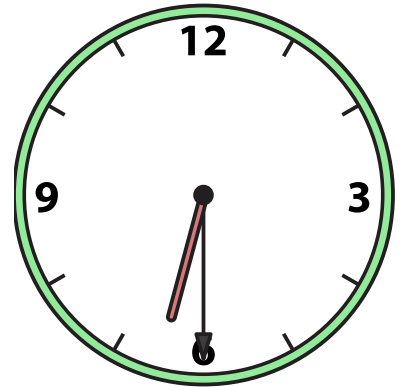
4) 9:00



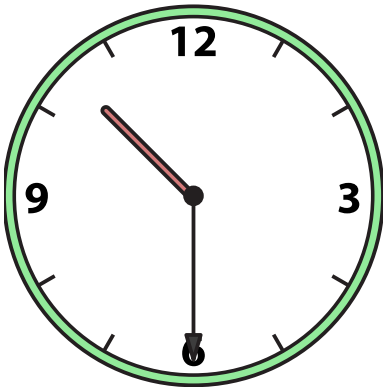
5) 12:00



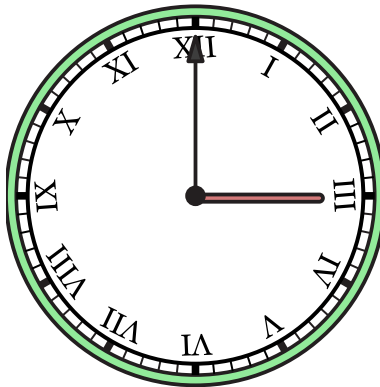
6) 6:30



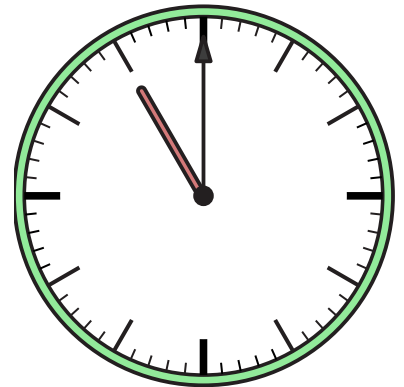
7) 10:30



8) 3:00



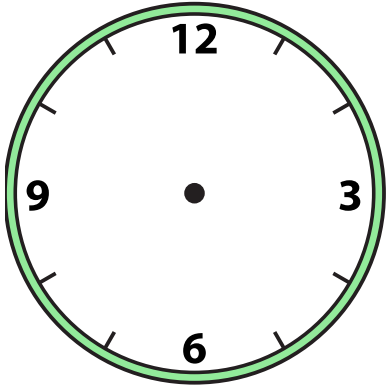
9) 11:00



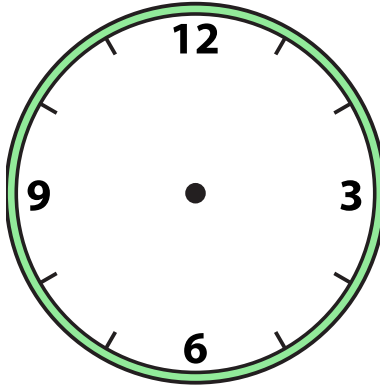


Draw the hour and minute hand on the clock so it represents the time shown.

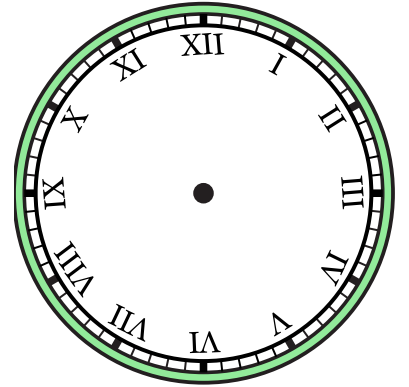
1) 12:00



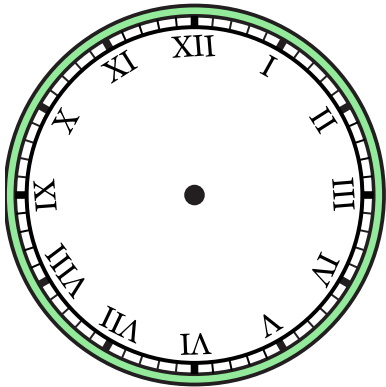
2) 6:30



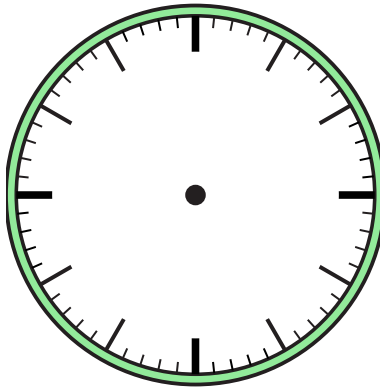
3) 7:00



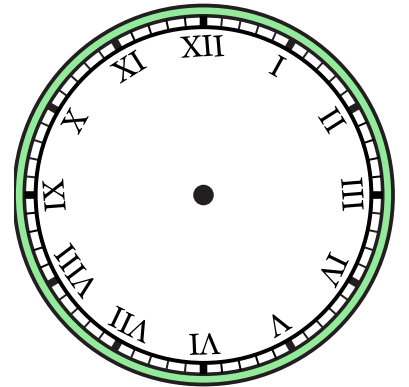
4) 8:30



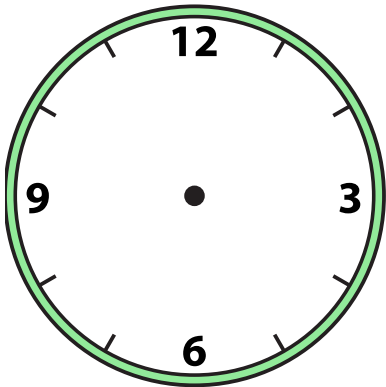
5) 2:00



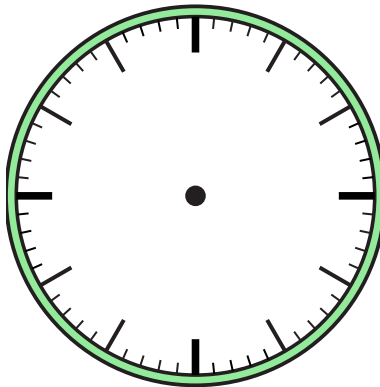
6) 5:00



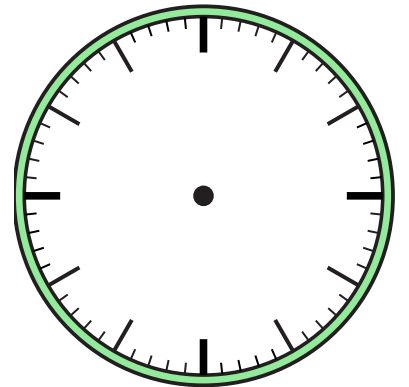
7) 4:30



8) 2:30



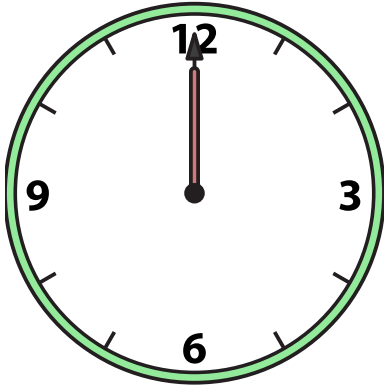
9) 9:30



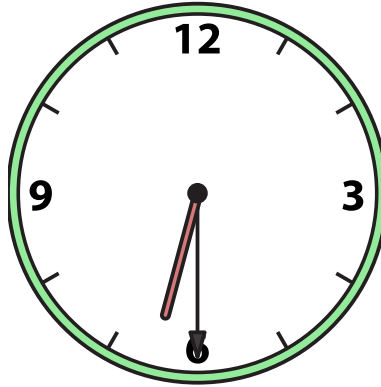


Draw the hour and minute hand on the clock so it represents the time shown.

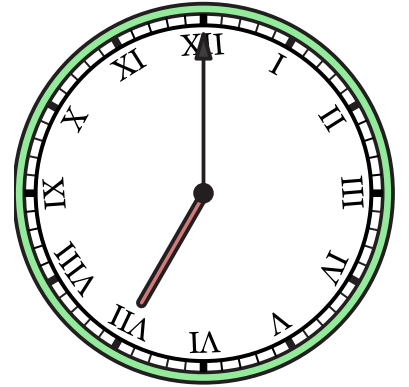
1) 12:00



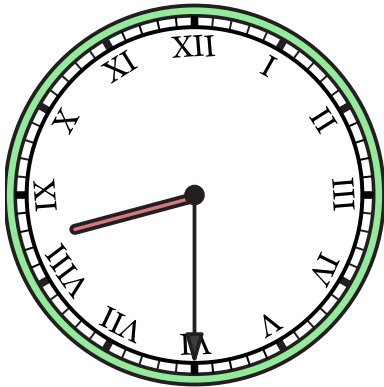
2) 6:30



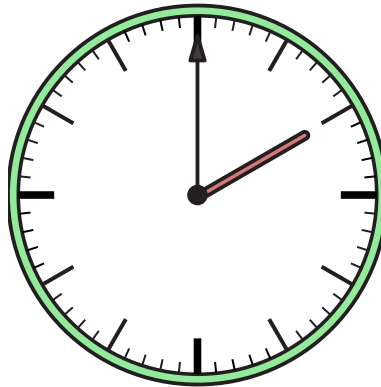
3) 7:00



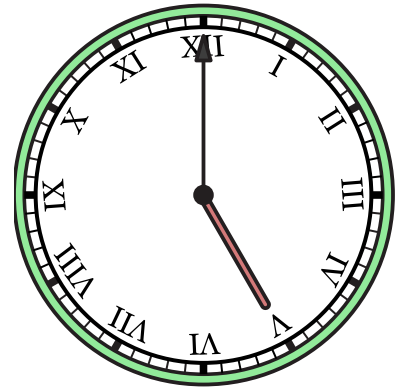
4) 8:30



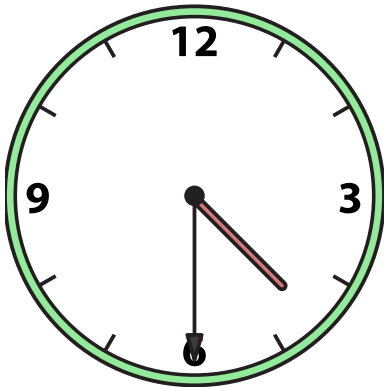
5) 2:00



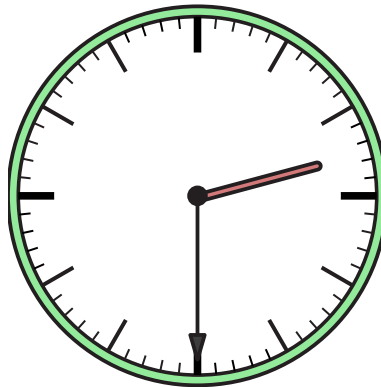
6) 5:00



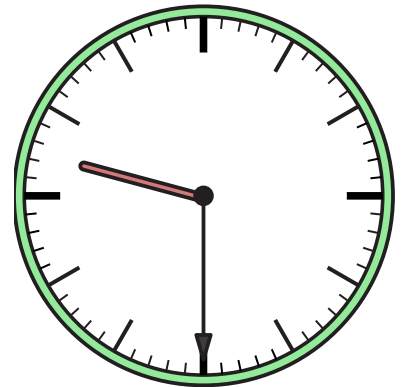
7) 4:30



8) 2:30



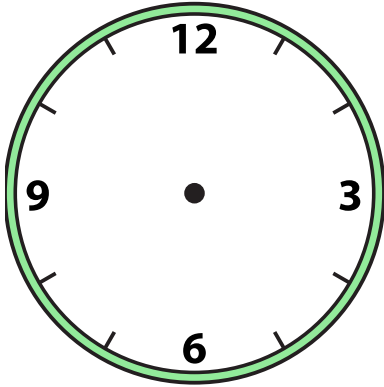
9) 9:30



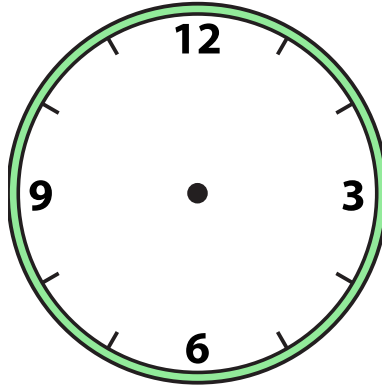


Draw the hour and minute hand on the clock so it represents the time shown.

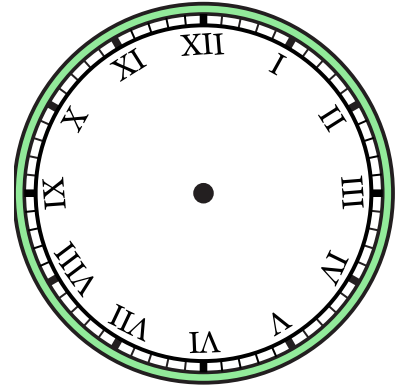
1) 3:00



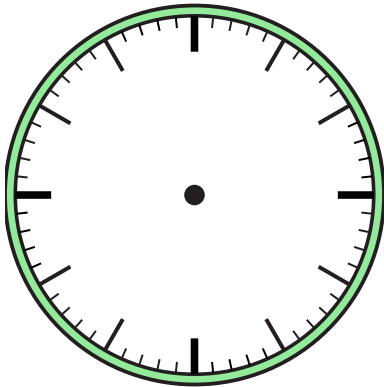
2) 10:00



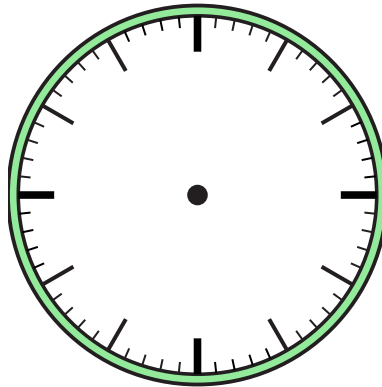
3) 5:30



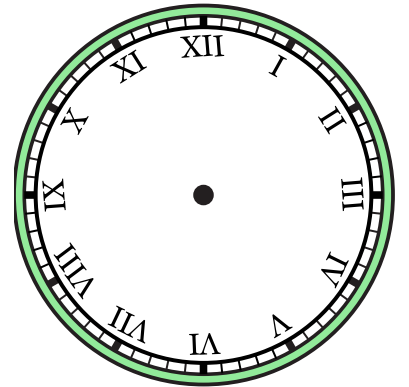
4) 7:30



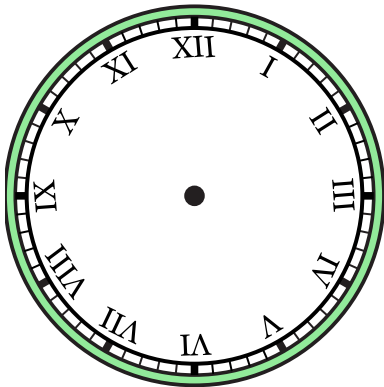
5) 5:00



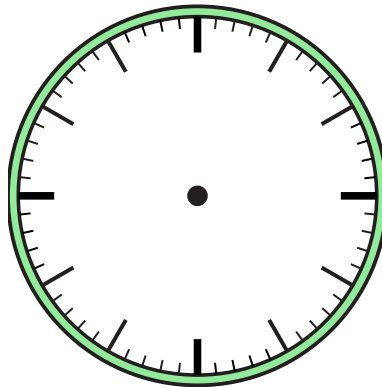
6) 2:00



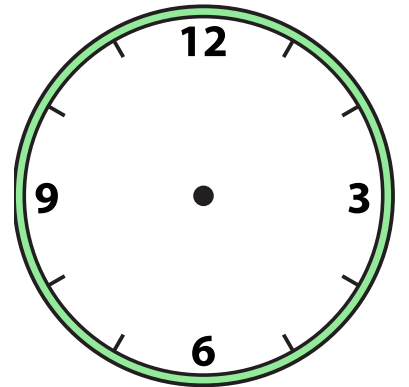
7) 7:00



8) 9:00



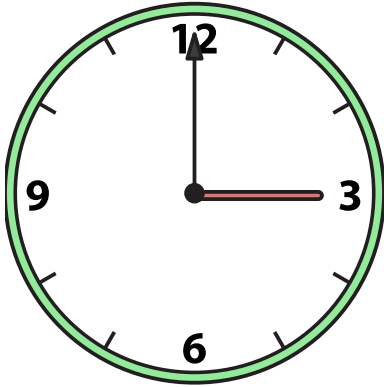
9) 1:00



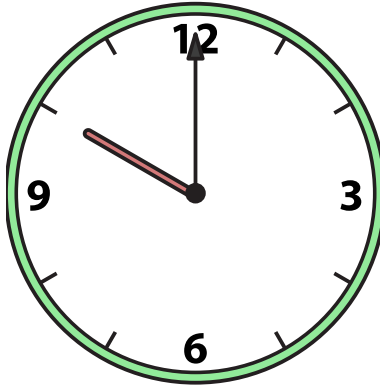


Draw the hour and minute hand on the clock so it represents the time shown.

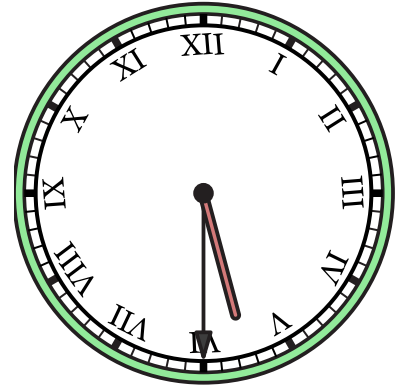
1) 3:00



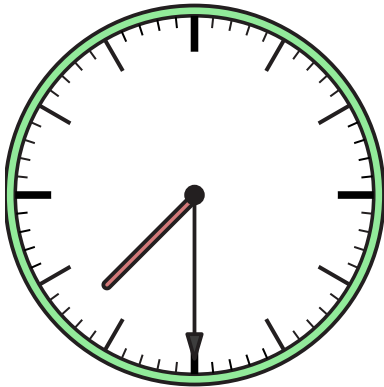
2) 10:00



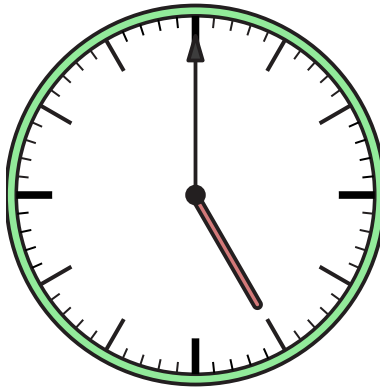
3) 5:30



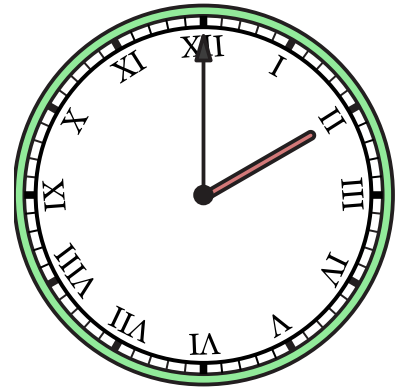
4) 7:30



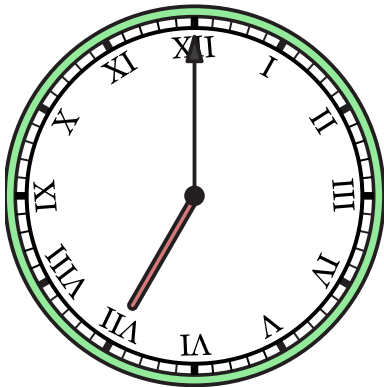
5) 5:00



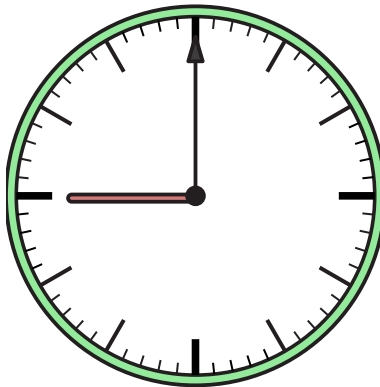
6) 2:00



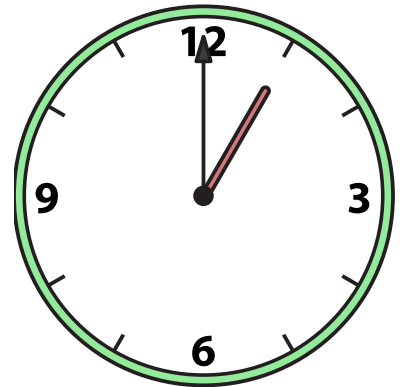
7) 7:00



8) 9:00



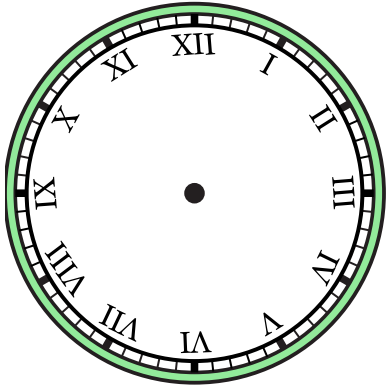
9) 1:00



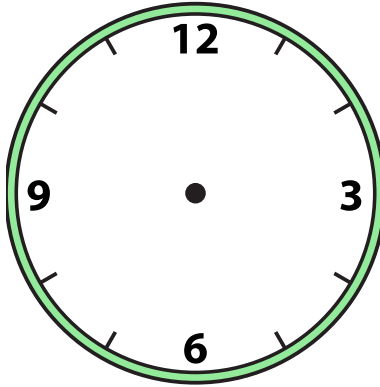


Draw the hour and minute hand on the clock so it represents the time shown.

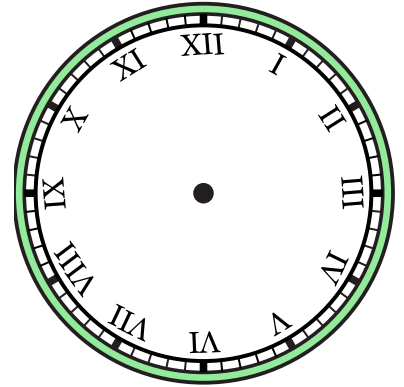
1) 12:00



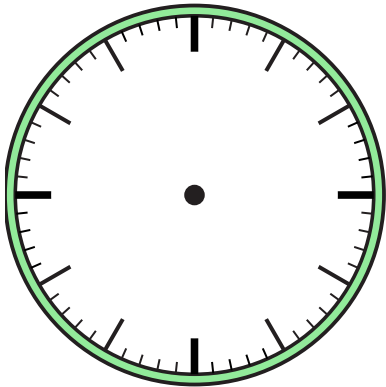
2) 9:30



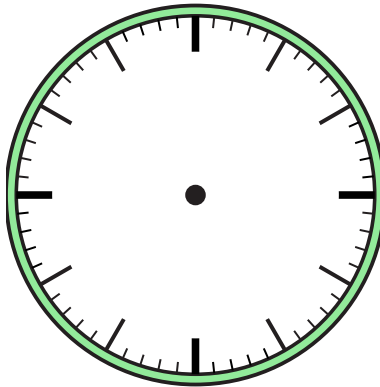
3) 8:30



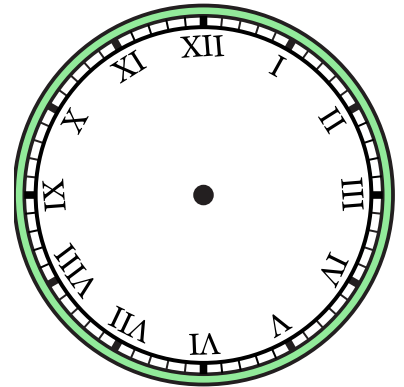
4) 2:30



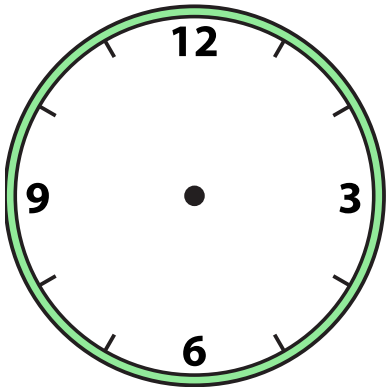
5) 10:30



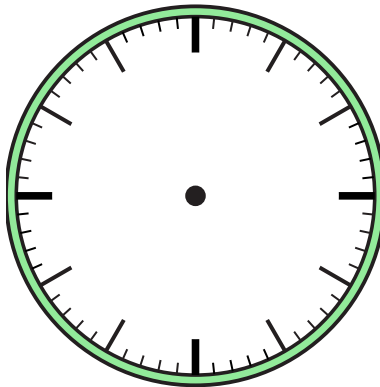
6) 4:30



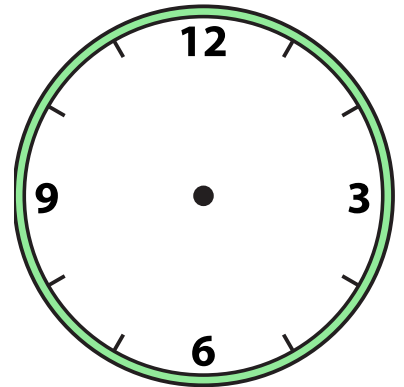
7) 5:30



8) 11:30



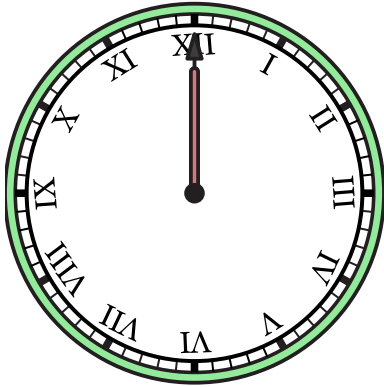
9) 1:30



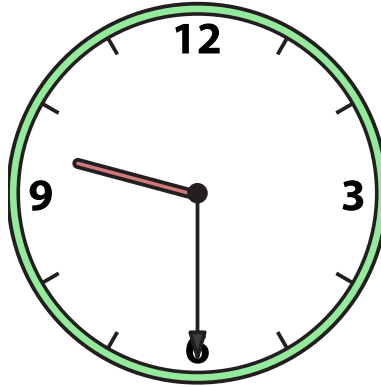


Draw the hour and minute hand on the clock so it represents the time shown.

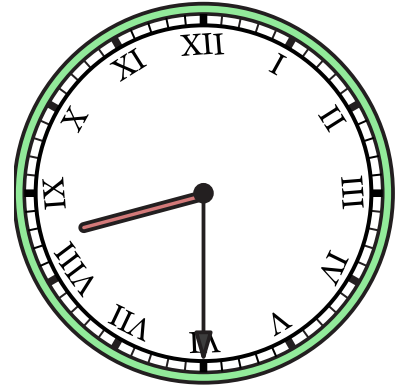
1) 12:00



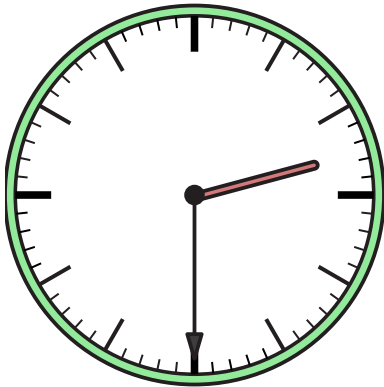
2) 9:30



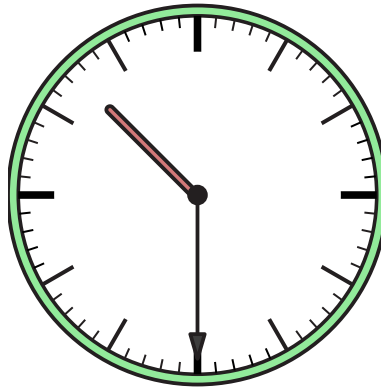
3) 8:30



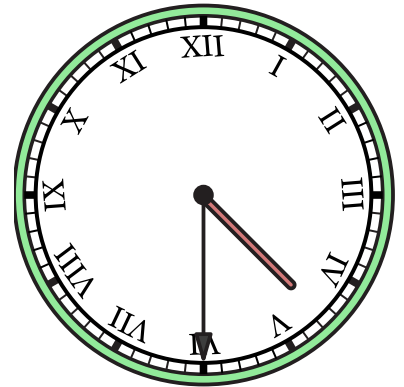
4) 2:30



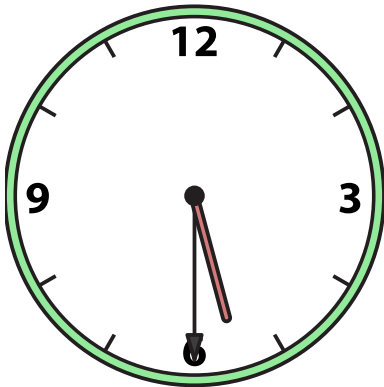
5) 10:30



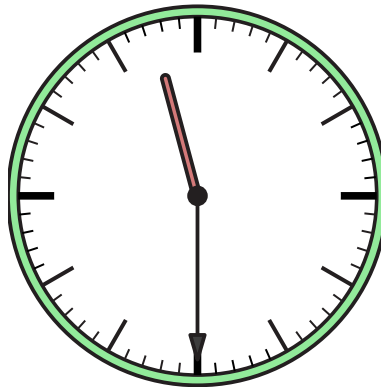
6) 4:30



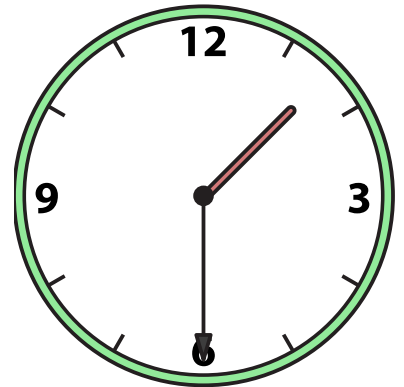
7) 5:30



8) 11:30



9) 1:30

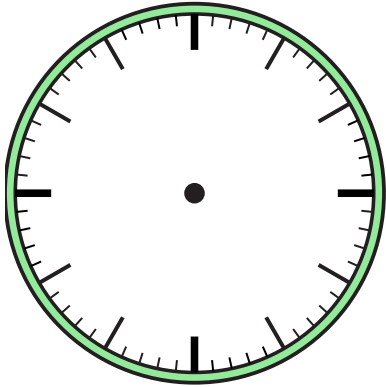




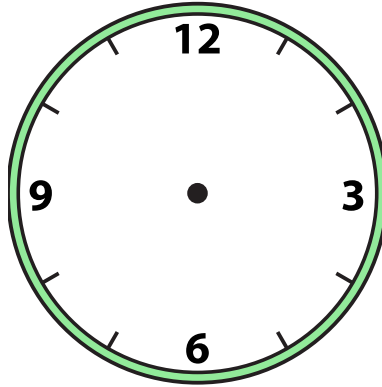


Draw the hour and minute hand on the clock so it represents the time shown.

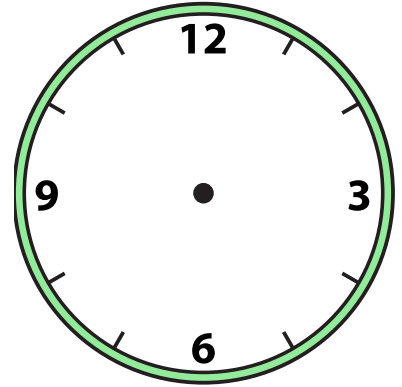
1) 3:30



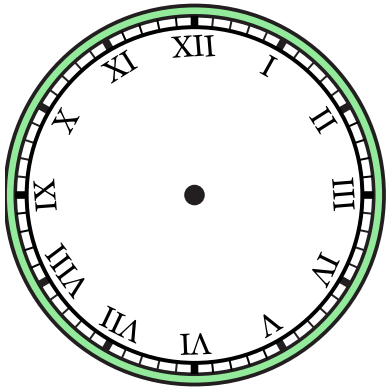
2) 3:00



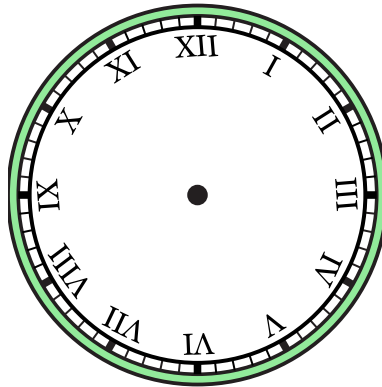
3) 4:30



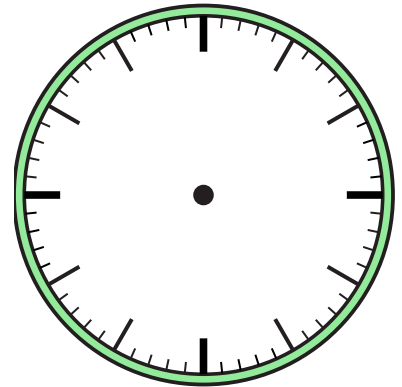
4) 8:30



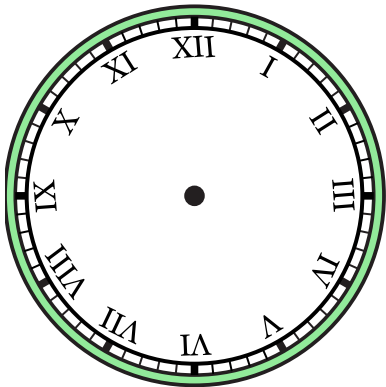
5) 1:30



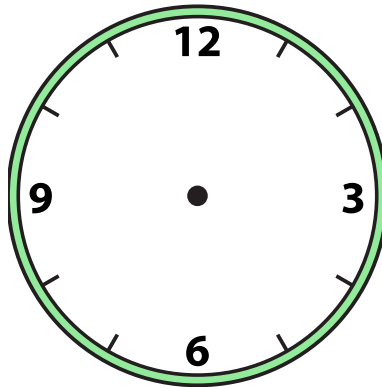
6) 9:00



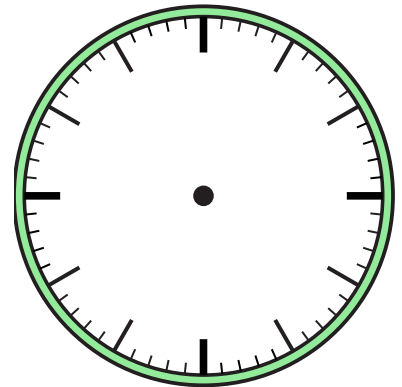
7) 7:00



8) 6:00



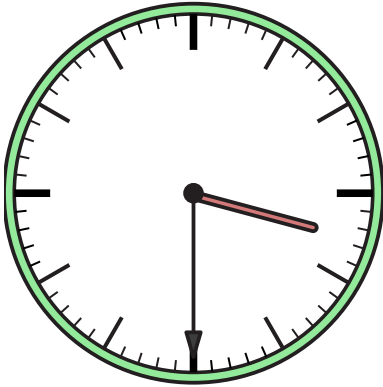
9) 5:00



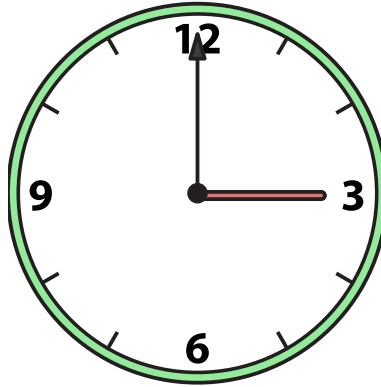


Draw the hour and minute hand on the clock so it represents the time shown.

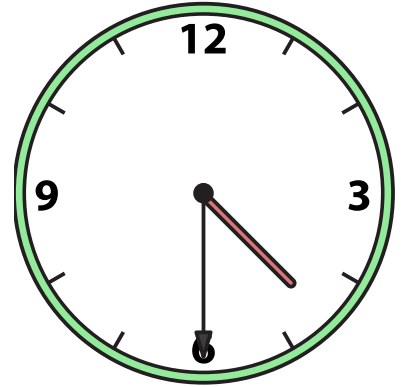
1) 3:30



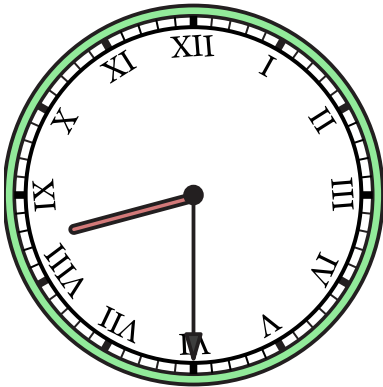
2) 3:00



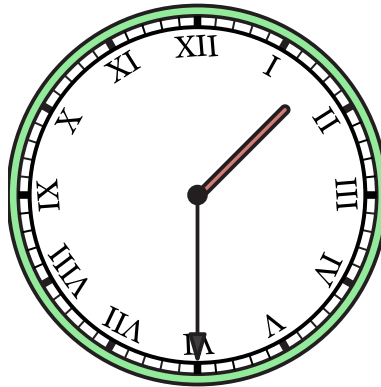
3) 4:30



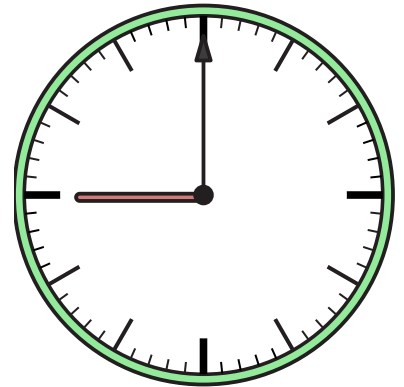
4) 8:30



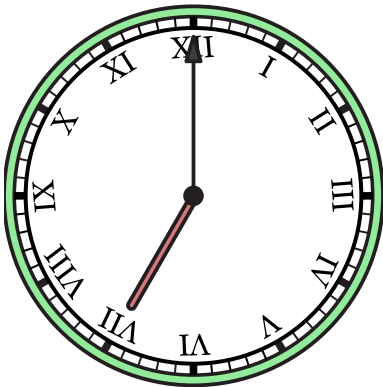
5) 1:30



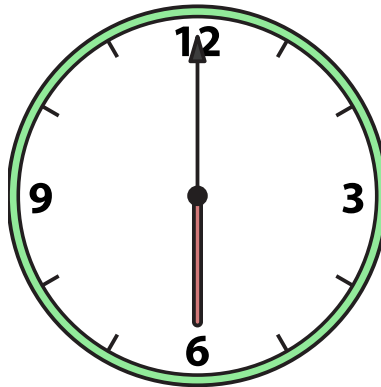
6) 9:00



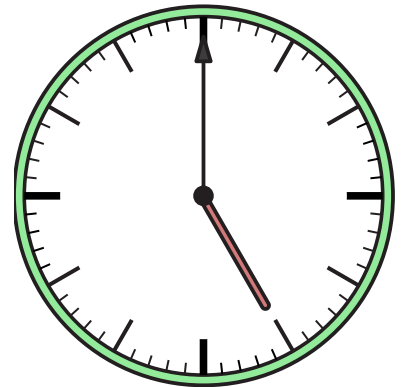
7) 7:00



8) 6:00



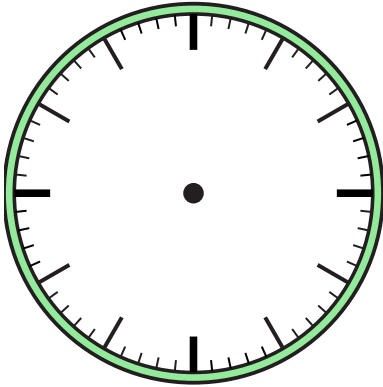
9) 5:00



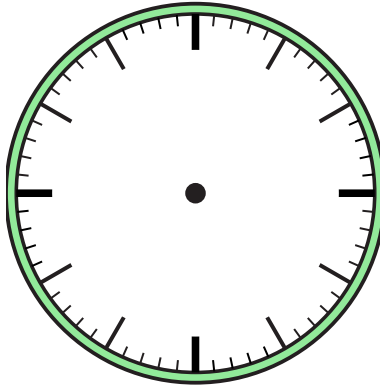


Draw the hour and minute hand on the clock so it represents the time shown.

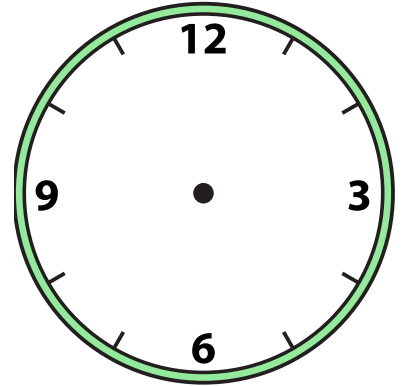
1) 11:30



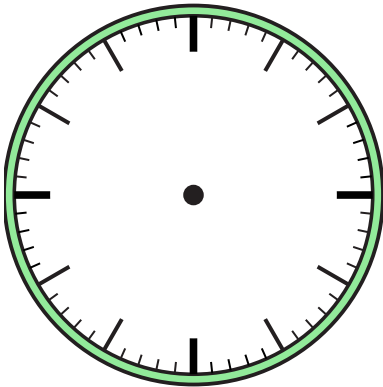
2) 7:00



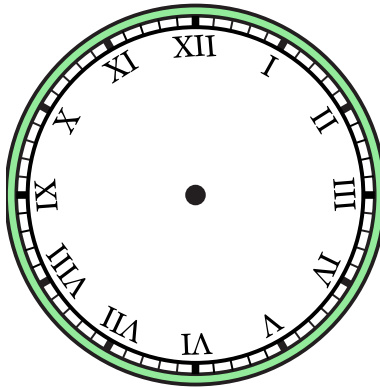
3) 8:00



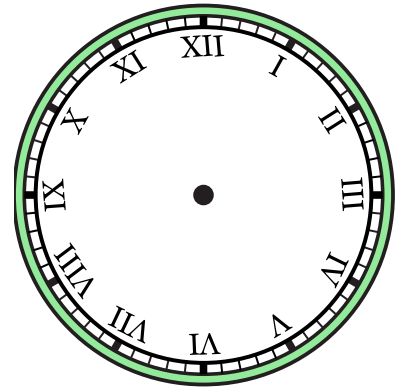
4) 10:00



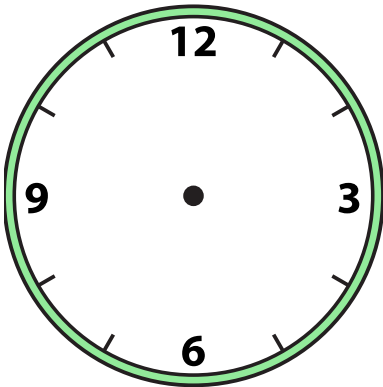
5) 2:30



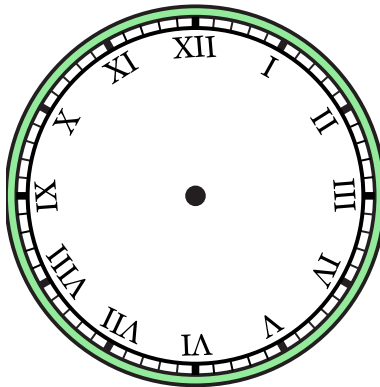
6) 2:00



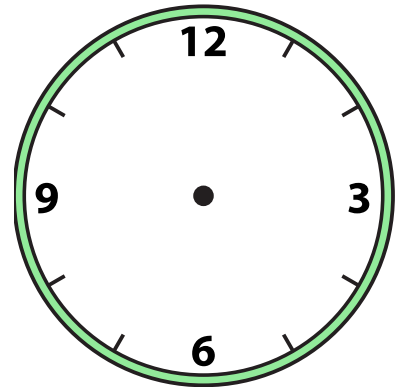
7) 12:30



8) 4:00



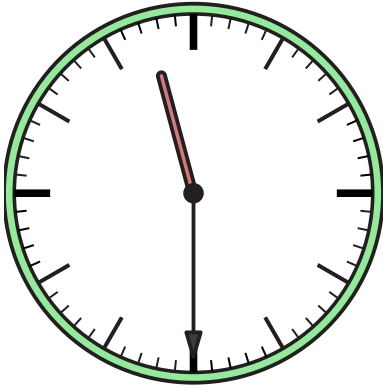
9) 12:30



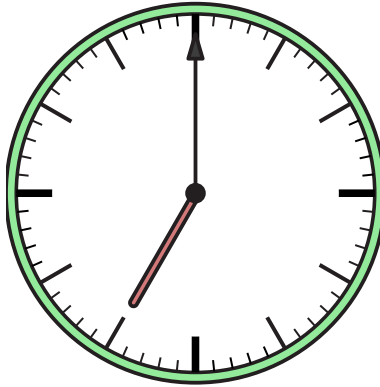


Draw the hour and minute hand on the clock so it represents the time shown.

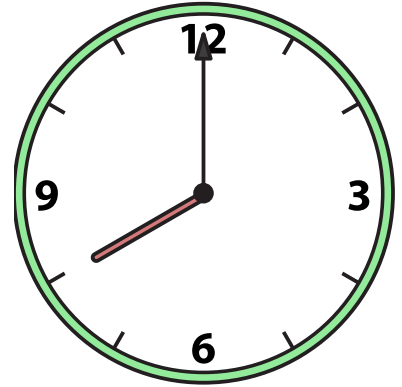
1) 11:30



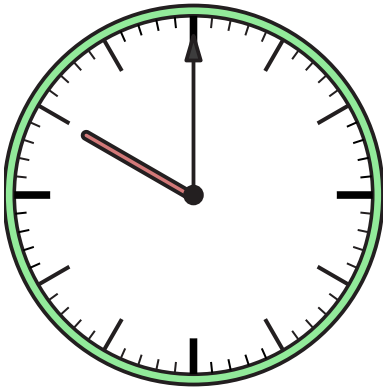
2) 7:00



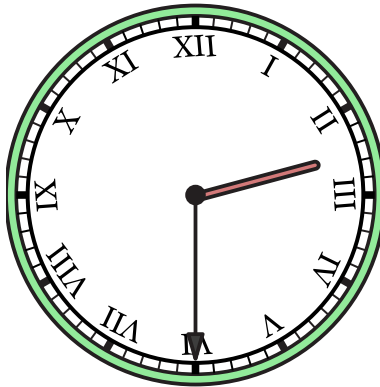
3) 8:00



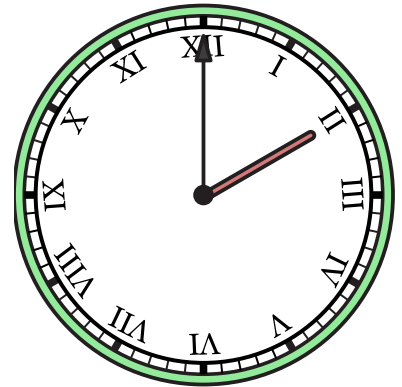
4) 10:00



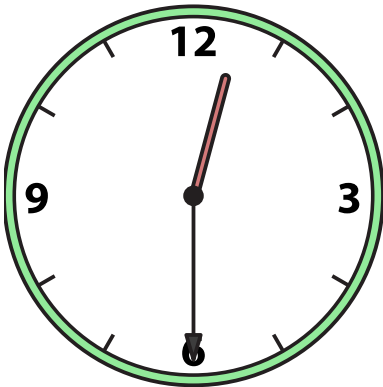
5) 2:30



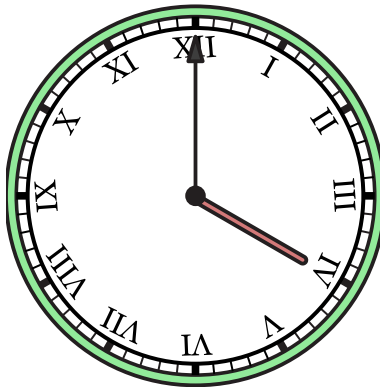
6) 2:00



7) 12:30



8) 4:00



9) 12:30

