



Determine which letter best represents the weight.

**Gram (g)**

A gram is about the weight of a paperclip.



**Kilogram (kg)**

A kilogram is about the weight of a thick book.



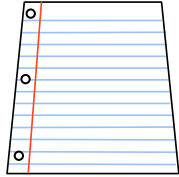
**Remember:**

Kilo means 1,000. So a kilogram is 1,000 grams.  
1 Kilogram is also about the same weight as 2 pounds.

**Answers**

1. \_\_\_\_\_
2. \_\_\_\_\_
3. \_\_\_\_\_
4. \_\_\_\_\_
5. \_\_\_\_\_
6. \_\_\_\_\_
7. \_\_\_\_\_
8. \_\_\_\_\_
9. \_\_\_\_\_

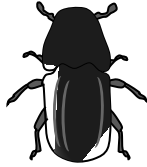
1)



Notebook Paper

- A. 3 grams
- B. 85 grams
- C. 1 kilogram
- D. 500 grams

2)



Beetle

- A. 2 kilograms
- B. 5000 grams
- C. 500 grams
- D. 1 gram

3)



Toothbrush

- A. 15 kilograms
- B. 30 grams
- C. 500 kilograms
- D. 1 gram

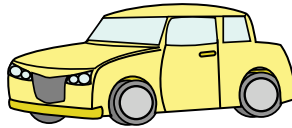
4)



Pen

- A. 5 kilograms
- B. 5 grams
- C. 5000 grams
- D. 500 grams

5)



Car

- A. 2000 kilograms
- B. 15 grams
- C. 6000 grams
- D. 2 kilograms

6)



Cereal Box

- A. 5 grams
- B. 425 kilograms
- C. 425 grams
- D. 5 kilograms

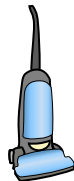
7)



Bug

- A. 50 grams
- B. 50 kilograms
- C. 1 kilogram
- D. 1 gram

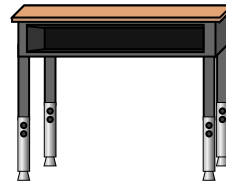
8)



Vacuum

- A. 500 kilograms
- B. 50 grams
- C. 20 kilograms
- D. 90 grams

9)



Desk

- A. 300 kilograms
- B. 15 kilograms
- C. 15 grams
- D. 300 grams



Determine which letter best represents the weight.

**Gram (g)**

A gram is about the weight of a paperclip.



**Kilogram (kg)**

A kilogram is about the weight of a thick book.

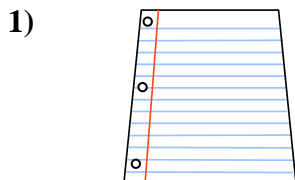


**Remember:**

Kilo means 1,000. So a kilogram is 1,000 grams.

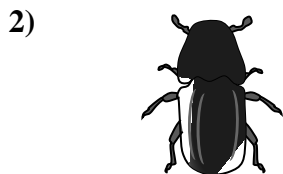
1 Kilogram is also about the same weight as 2 pounds.

**Answers**



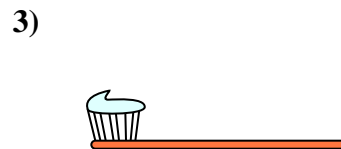
Notebook Paper

- A. 3 grams
- B. 85 grams
- C. 1 kilogram
- D. 500 grams



Beetle

- A. 2 kilograms
- B. 5000 grams
- C. 500 grams
- D. 1 gram



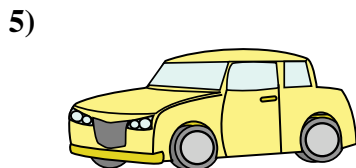
Toothbrush

- A. 15 kilograms
- B. 30 grams
- C. 500 kilograms
- D. 1 gram



Pen

- A. 5 kilograms
- B. 5 grams
- C. 5000 grams
- D. 500 grams



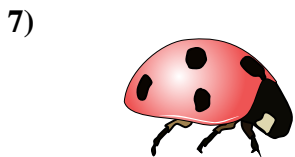
Car

- A. 2000 kilograms
- B. 15 grams
- C. 6000 grams
- D. 2 kilograms



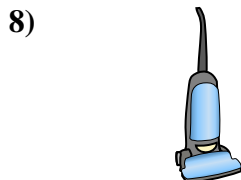
Cereal Box

- A. 5 grams
- B. 425 kilograms
- C. 425 grams
- D. 5 kilograms



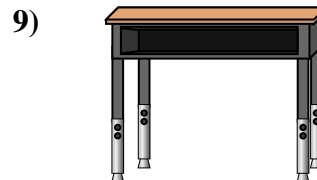
Bug

- A. 50 grams
- B. 50 kilograms
- C. 1 kilogram
- D. 1 gram



Vacuum

- A. 500 kilograms
- B. 50 grams
- C. 20 kilograms
- D. 90 grams



Desk

- A. 300 kilograms
- B. 15 kilograms
- C. 15 grams
- D. 300 grams

- 1. **A**
- 2. **D**
- 3. **B**
- 4. **B**
- 5. **A**
- 6. **C**
- 7. **D**
- 8. **C**
- 9. **B**